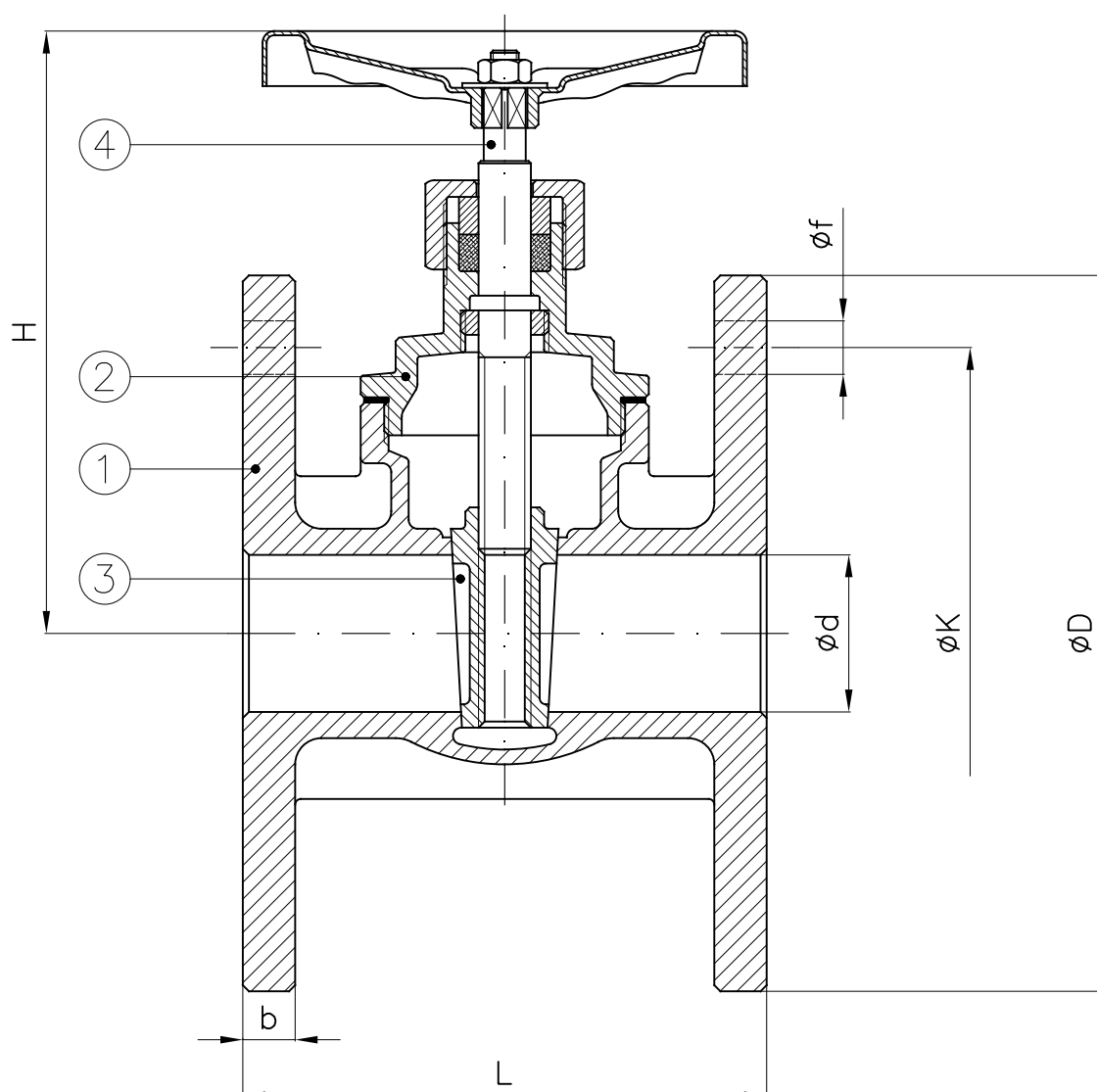




Conform to:
UNI-EN1092



							PN6 — NP6				PN16 — NP16			
DN	b	d	H	L (type "Al")	L (type "RV")	Weight (Kg)	D	K	f	Holes NO. f	D	K	f	Holes NO. f
15	9	16	82	65	75	1.2	80	55	11	4	95	65	14	4
20	9.5	22	103	80		1.8	90	65	11	4	105	75	14	4
25	9.5	25	103	85	90	2.1	100	75	11	4	115	85	14	4
32	10.5	32	122		100	3.4	120	90	14	4	140	100	18	4
40	10.5	40	132		110	4.2	130	100	14	4	150	110	18	4
50	11	48	155		125	5.6	140	110	14	4	165	125	18	4
65	13	65	198	140	145	7.4	160	130	14	4	185	145	18	4
80	14	80	237	150	162	10	190	150	18	4	200	160	18	8
100	15	100	302		170	14.7	210	170	18	4	220	180	18	8
125	17	119	312		200	22.1	240	200	18	8	250	210	18	8
150	17	145	370		210	31	265	225	18	8	285	240	22	8

Combinazione materiali standard — Standard materials Combination		
		B/O
ITEM	DENOMINAZIONE DENOMINATION	MATERIALE MATERIAL
01	Body	Bronze UNI EN1982 G-CuSn5Zn5Pb5
02	Bonnet	Brass CW617N (OT58)
03	Disc	Brass CW617N (OT58)
04	Stem	Brass CW617N (OT58)
Nota: Combinazioni materiali non standard a richiesta		
Note: Non standard materials combinations on request		