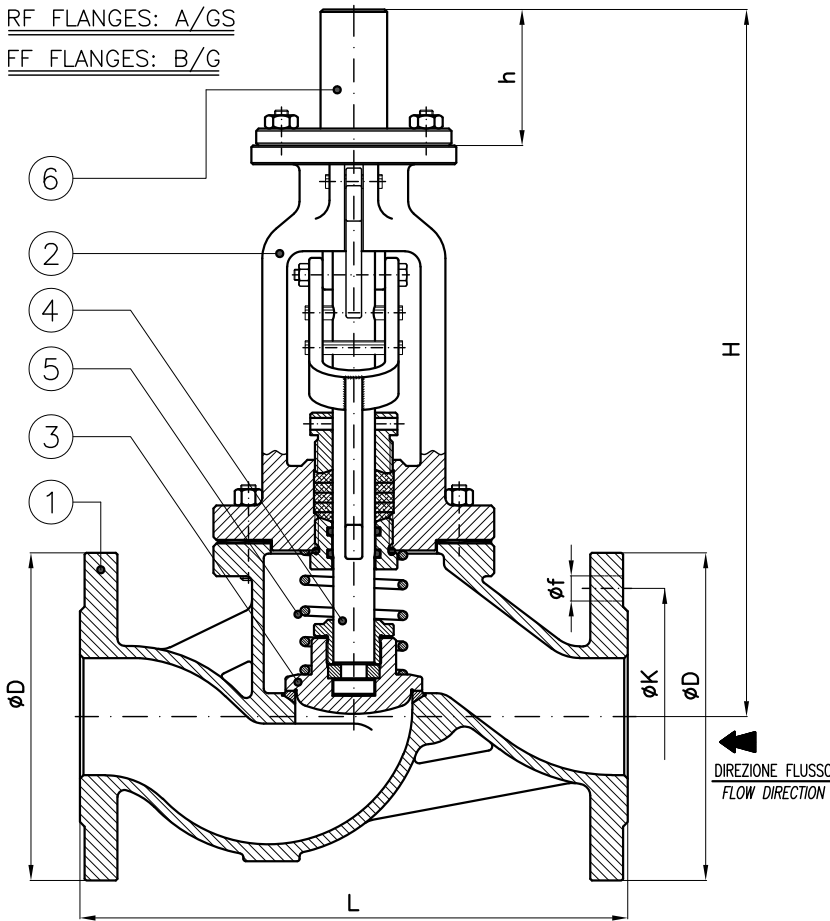
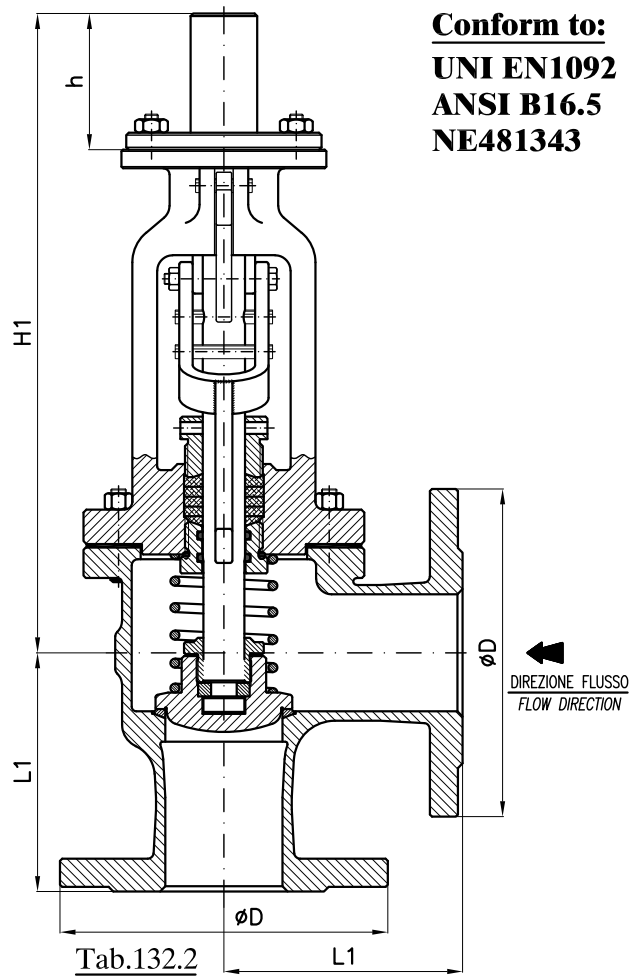




RF FLANGES: A/GS
 FF FLANGES: B/G



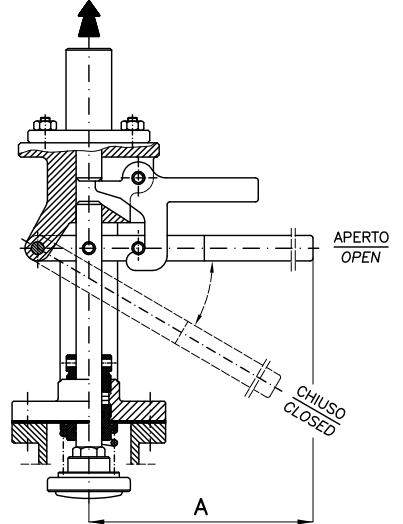
Tab.132.1



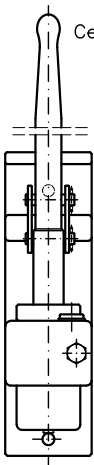
Tab.132.2

Conform to:
UNI EN1092
ANSI B16.5
NE481343

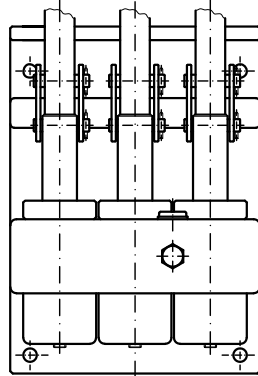
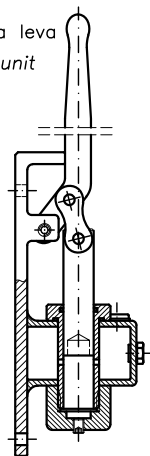
Alla centralina
 To hydraulic remote control



Centralina di comando a leva
 One lever operating unit



Centralina di comando a 3 leve
 Three lever operating unit



DN	H	L	Weight (≈Kg)	H1	L1	Weight (≈Kg)	A	h	PN6				PN16				ANSI150			
									D	K	f	Holes No. f	D	K	f	Holes No. f	D	K	f	Holes No. f
20	320	150	8	305	85	9	325	81	90	65	11	4	105	75	14	4	98.4	70	16	4
25	325	160	10	310	90	10	325	81	100	75	11	4	115	85	14	4	108	79	16	4
32	385	180	16	355	105	17	360	81	120	90	14	4	140	100	18	4	118	89	16	4
40	385	200	16.5	355	115	17.5	360	81	130	100	14	4	150	110	18	4	127	98	16	4
50	395	230	18	365	125	20.5	360	81	140	110	14	4	165	125	18	4	152	121	19	4
65	415	290	26	410	145	24	405	81	160	130	14	4	185	145	18	4	178	140	19	4
80	455	310	31	415	155	28	405	81	190	150	18	4	200	160	18	8	190	152	19	4
100	505	350	48	445	175	44	445	81	210	170	18	4	220	180	18	8	229	191	19	8
125	525	400	63	455	200	59	445	81	240	200	18	8	250	210	18	8	254	216	22	8
150	545	480	80	465	225	72	445	81	265	225	18	8	285	240	22	8	279	241	22	8
200	615	600	138	505	275	124	460	81	320	280	18	8	340	295	22	12	343	298	22	8



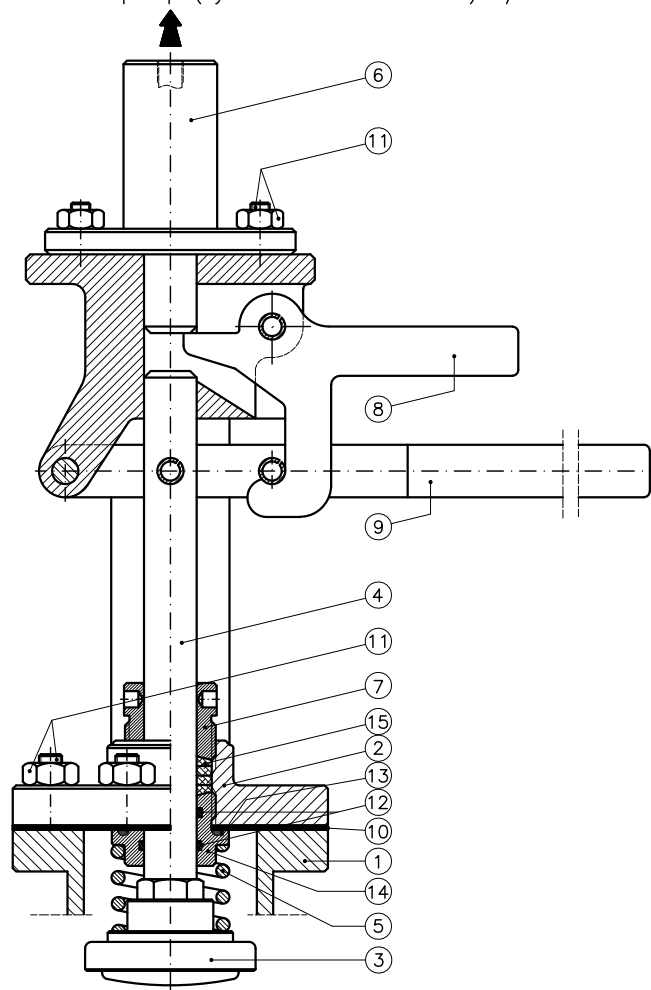
Connessione alla pompa a mano 1/8" Gas conico
 Connection to hand pump (hydraulic remote control) 1/8" Gas BSPT

Istruzioni di montaggio:

- 1) Montare le valvole osservando il senso del flusso nella valvola.
- 2) Collegare cilindro idraulico (connessione 1/8" Gas conico) alla pompa a mano Tab.132C con tubi oleodinamici 6x1 oppure 8x1
- 3) Installare la tubazione con una pendenza costante e raggio di curvatura non inferiore a 50mm.
- 4) Riempire l'impianto dopo essersi accertati che le tubazioni siano pulite e che le leve di comando siano in posizione aperta.
- 5) Utilizzare olio idraulico di qualità per liberare facilmente l'aria contenuta nel circuito.

Instruction of assembling:

- 1) Assemble the valves following the sense of the flow on the valve
- 2) Connect hydraulic cylinder (1/8"Gas BSPT connection) to the hand pump Tab.132C with hydraulic pipes 6x1 or 8x1
- 3) Install the pipe fittings with a constant incline and a radius of curvature no inferior to 50mm.
- 4) Fill the system after having verified that the pipe fittings are clean and that the control lever are in opening position.
- 5) Use hydraulic oil of quality for easily release the air contain on the circuit.



Combinazione materiali standard – Standard materials Combination					
ITEM	DENOMINAZIONE DENOMINATION	GS/316 MATERIALE MATERIAL	A/316 MATERIALE MATERIAL	B/316 MATERIALE MATERIAL	G/316 MATERIALE MATERIAL
01	Body	Nodular cast iron EN-GJS-400-15U UNI EN1563	Cast steel GP240-GH UNI EN10213	Bronze UNI EN1982 G-CuSn5Zn5Pb5	Cast iron UNI EN1561 EN-GJL-250
02	Bonnet	Nodular cast iron EN-GJS-400-15U UNI EN1563	Nodular cast iron EN-GJS-400-15U UNI EN1563	Bronze UNI EN1982 G-CuSn5Zn5Pb5	Nodular cast iron EN-GJS-400-15U UNI EN1563
03	Disc (≤ DN80)	Stainless steel AISI316 UNI EN10088	Stainless steel AISI316 UNI EN10088	Stainless steel AISI316 UNI EN10088	Stainless steel AISI316 UNI EN10088
03	Disc (≥ DN100)	Cast steel GP240-GH UNI EN10213 plus AISI316 facing welding	Cast steel GP240-GH UNI EN10213 plus AISI316 facing welding	Cast steel GP240-GH UNI EN10213 plus AISI316 facing welding	Cast steel GP240-GH UNI EN10213 plus AISI316 facing welding
04	Stem	Stainless steel AISI316 UNI EN10088	Stainless steel AISI316 UNI EN10088	Stainless steel AISI316 UNI EN10088	Stainless steel AISI316 UNI EN10088
05	Spring	Steel UNI EN10270	Steel UNI EN10270	Steel UNI EN10270	Steel UNI EN10270
06	Hydraulic cylinder	Carbon steel	Carbon steel	Carbon steel	Carbon steel
07	Stuffing box	Steel UNI EN10025	Steel UNI EN10025	Brass CW617N (OT58)	Steel UNI EN10025
08	Release lever	Steel UNI EN10025	Steel UNI EN10025	Steel UNI EN10025	Steel UNI EN10025
09	Resetting lever	Steel UNI EN10025	Steel UNI EN10025	Steel UNI EN10025	Steel UNI EN10025
10	Gasket	Planiflex KG carbo/C PF81	Planiflex KG carbo/C PF81	Planiflex KG carbo/C PF81	Planiflex KG carbo/C PF81
11	Nuts and bolts	Galvanized Steel 8.8 EN20898-1	Galvanized Steel 8.8 EN20898-1	Galvanized Steel 8.8 EN20898-1	Galvanized Steel 8.8 EN20898-1
12	OR gasket	Viton	Viton	Viton	Viton
13	OR gasket	NBR	NBR	NBR	NBR
14	Gland	AVP Steel UNI EN10277	AVP Steel UNI EN10277	Brass CW617N (OT58)	AVP Steel UNI EN10277
15	Packing	Kevlar graphite KGL	Kevlar graphite KGL	Kevlar graphite KGL	Kevlar graphite KGL

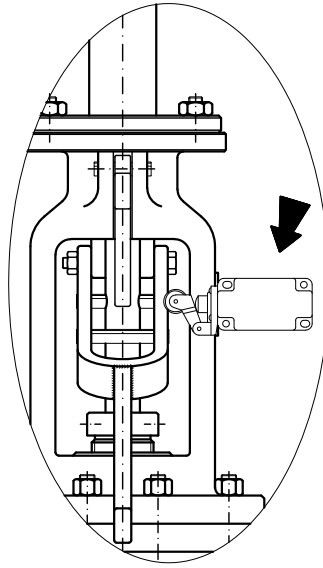
Nota: Combinazioni materiali non standard a richiesta
 Note: Non standard materials combinations on request



Accessorio a richiesta
Optional accessory

Finecorsa - Switch

N° 1 Finecorsa FD 502 con basetta
 N° 1 Limit switch FD 502 with base



Cilindro idraulico standard
Standard hydraulic cylinder

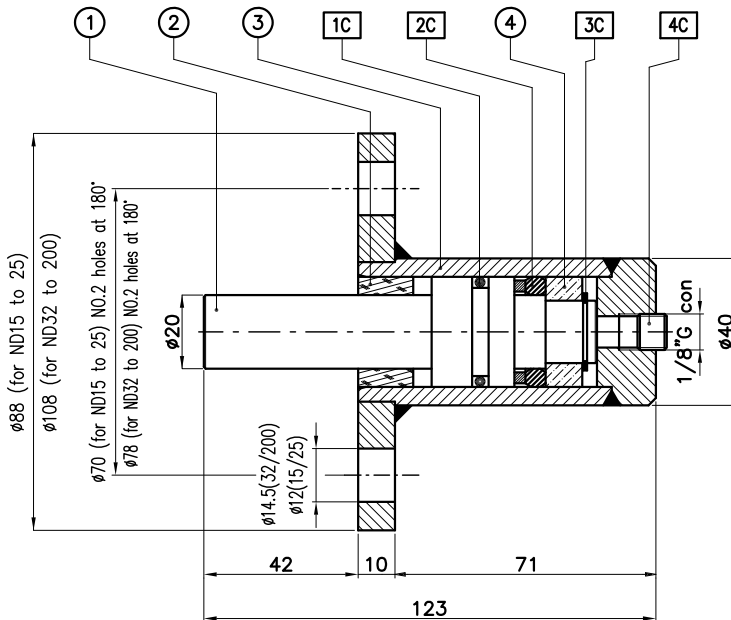
(Per comando da unica postazione)
(For control from a single workstation)

H.102/0005/BS (ND15 to 25)
H.102/0005S (ND32 to 200)

Cilindro idraulico a doppio comando
Double control hydraulic cylinder

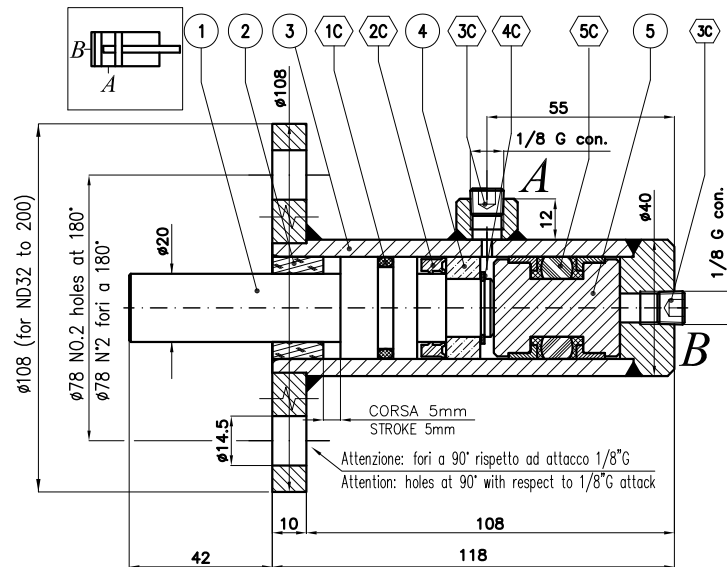
(Per comando da doppia postazione, collegamento a pompa postazione A e collegamento a pompa postazione B)
(For control from a double workstation, Connect to the pump the workstation A and connect to the pump the workstation B)

H.102/0005/D (ND32 to 200)



POS	CODICE/CODE	DESCRIZIONE	DESCRIPTION	Npm
1	H.102.0-03	ASTA-PISTONE X H.102/...	ROD	1
2	H.102.0-04	ANELLO GUIDA IN NYLON 30X20X15	GUIDE RING	1
3	H.102.1	ASS.SALD.CILINDRO	HOUSING WELDED ASSEMBLY	1
4	H.102.0-02	RONDELLA IN OTTONE	SPACER	1

POS	CODICE/CODE	DESCRIZIONE	DESCRIPTION	Npm
1C	CG.OR 3.02340	GUARNIZ. OR 4093/213	O-RING	1
2C	CG.B 118078	GUARNIZ. BALSELE 30X20X8.5	ROD SEAL	1
3C	C.3653.017	ANELLO SEEGER E 17	EXT.CIRCLIP	1
4C	C.DIN906 1/8G	TAPPO 1/8 GAS CONICO	HEX.SOCKET PIPE PLUG	1



POS	CODICE/CODE	DESCRIZIONE	DESCRIPTION	Npm
1	H.102.0-03	ASTA-PISTONE X H.102/...	ROD	1
2	H.102.0-04	ANELLO GUIDA IN NYLON 30X20X15	GUIDE RING	1
3	H.102.1-00/D	ASS.SALD.CILINDRO X H.102/0005/D	HOUSING WELDED ASSEMBLY	1
4	H.102.0-02	RONDELLA IN OTTONE	SPACER	1
5	H.102.0-01	PISTONE FLOTTANTE D30X37	FREE PISTON	1

POS	CODICE/CODE	DESCRIZIONE	DESCRIPTION	Npm
1C	CG.OR 3.02340	GUARNIZ. OR 4093/213	O-RING	1
2C	CG.TS20308/L	GUARNI.ASTA POLIUR. D30XD20X7.2	ROD SEAL	1
3C	C.DIN906 1/8G	TAPPO 1/8 GAS CONICO	HEX.SOCKET PIPE PLUG	2
4C	C.3653.017	ANELLO SEEGER E 17	EXT.CIRCLIP	1
5C	CG.DBM118066	GUARNIZ. BALMASTER D30	'DBM' PACKING	1