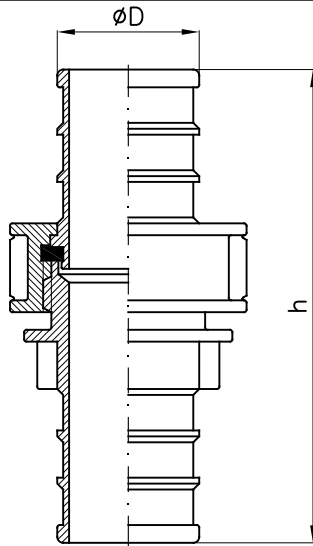




**Raccordo completo forma "A" in ottone EN1982 - Brass fire hose coupling "A" type italian standard**  
**Cannotto filettato maschio forma "A" in ottone EN1982 - Male part for coupling "A" type italian standard**  
**Cannotto non filettato forma "A" in ottone EN1982 - Female part for coupling "A" type italian standard**  
**Girello filettato femmina forma "A" in ottone EN1982 - Swivelling nut for coupling "A" type italian standard**

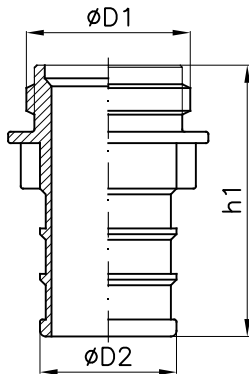
**Art.B20**  
**Art.B21**  
**Art.B22**  
**Art.B24**



### Art. B20

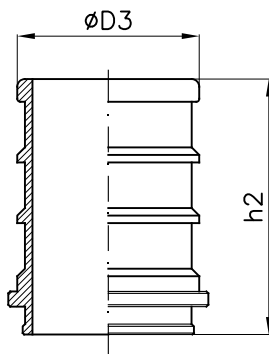
Tipo – Type	D	h
"A" export DN25	25	102
"A" pesante DN25	25	109
"A" export DN45	45	109
"A" pesante DN45 UNI804	45	151
"A" normale DN70	70	158
"A" pesante DN70 UNI804	70	194
"A" speciale	63	–

### Art. B21



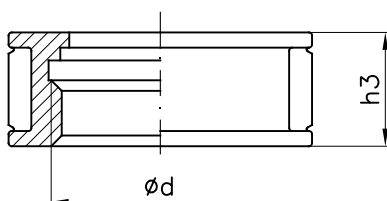
Tipo – Type	D1	D2	h1
"A" export DN25	M34x3	25	62
"A" pesante DN25	M34x3	25	71
"A" export DN45	M56x4	45	65
"A" pesante DN45 UNI805	M56x4	45	92
"A" normale DN70	M85x6	70	93
"A" pesante DN70 UNI805	M85x6	70	119
"A" speciale	M85x6	63	–

### Art. B22



Tipo – Type	D3	h2
"A" export DN25	25	42
"A" pesante DN25	25	42
"A" export DN45	45	42
"A" pesante DN45 UNI807	45	63
"A" normale DN70	70	71
"A" pesante DN70 UNI807	70	81
"A" speciale	63	–

### Art. B24



Tipo – Type	d	h3
"A" export DN25	M34x3	22
"A" pesante DN25	M34x3	24
"A" export DN45	M56x4	22
"A" pesante DN45 UNI808	M56x4	28
"A" normale DN70	M85x6	29
"A" pesante DN70 UNI808	M85x6	32