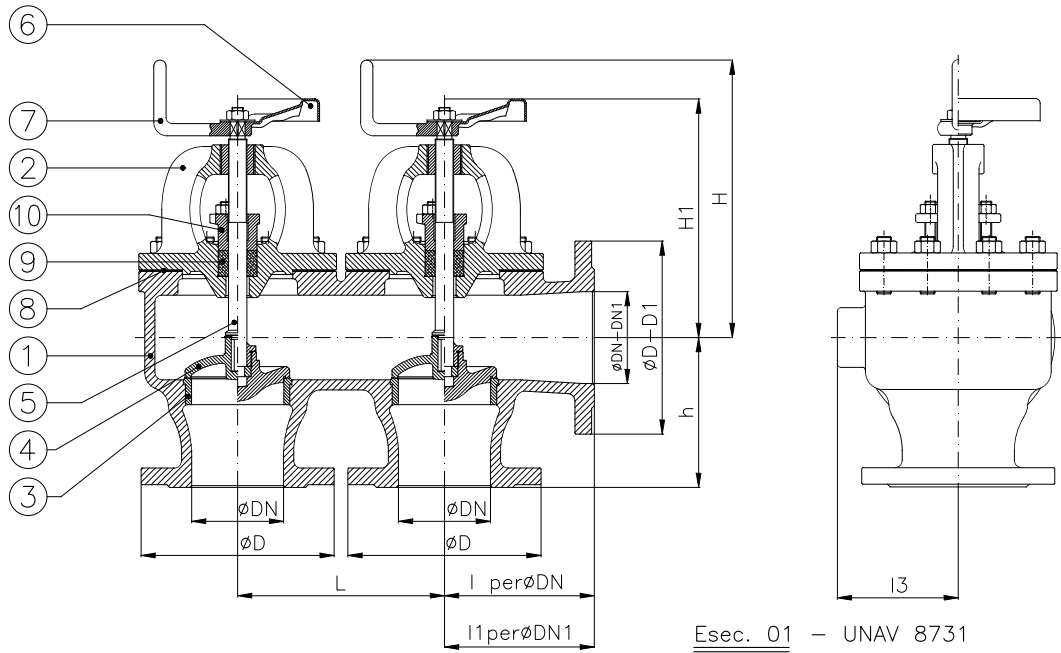




2 Elements



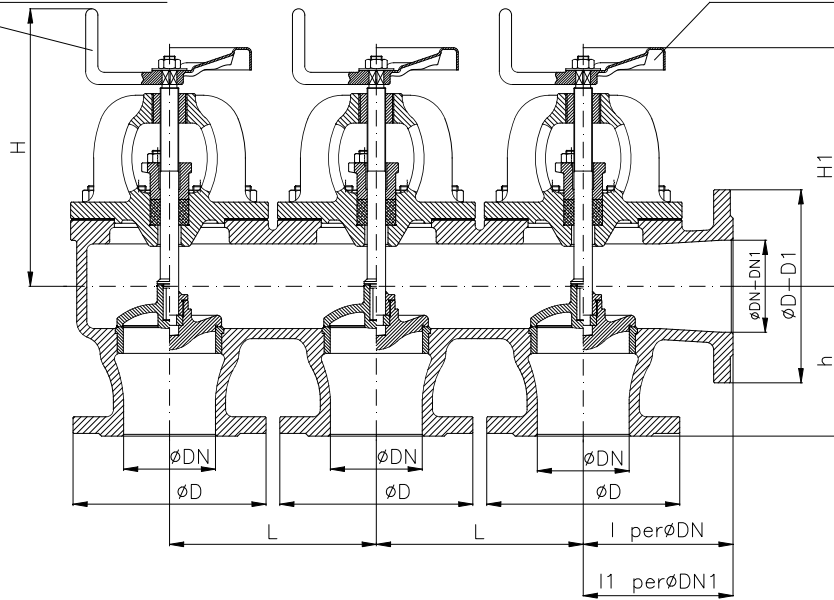
Esec. 02 - UNAV 8732

Semiautomatica con manovella
With loose disc and handle (SDNR)

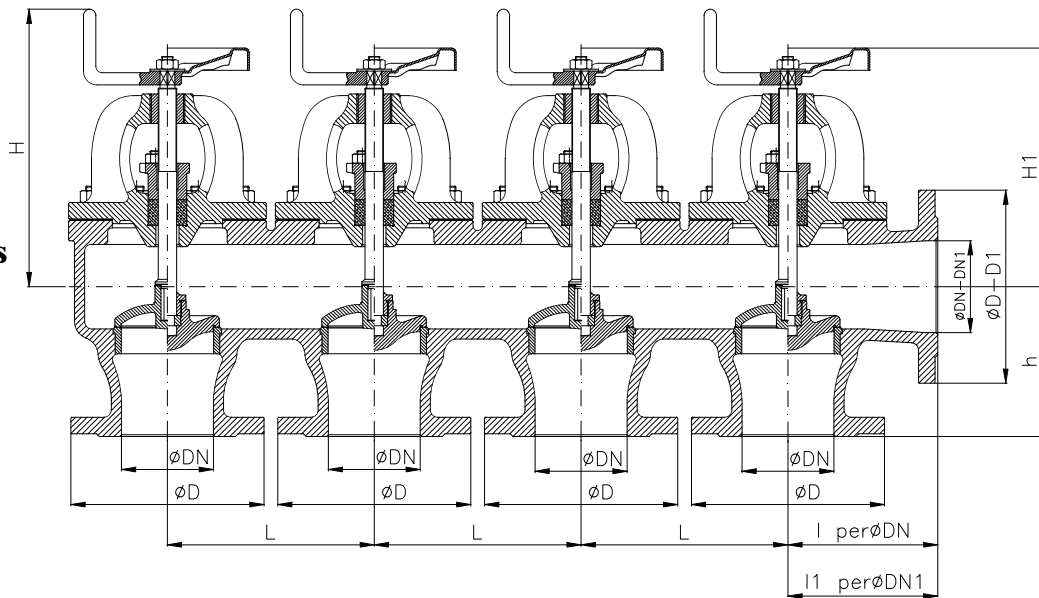
Esec. 01 - UNAV 8731

Comandata con volantino
With fixed disc and handwheel (SDSL)

3 Elements



4 Elements





DN (ASPIRAZIONE) (SUCTION)	DN1 (MANDATA) (DELIVERY)	D	D1	H (APERTA) (OPEN)	H1 (APERTA) (OPEN)	h	L	I	I1	I3 (-)	Weight (Kg) 2 elements	Weight (Kg) 3 elements	Weight (Kg) 4 elements
40	40-50	130	140	240	210	100	145	95	100	80	23	34	46
50	50-65	140	160	250	220	105	145	100	105	90	25	36	48
65	65-80	160	190	300	260	130	195	115	125	100	39	54	69
80	80-100	190	210	305	270	140	195	130	150	125	50	72	100
100	100-125	210	240	340	305	160	225	150	160	140	70	100	138
125	125-150	240	265	380	350	180	255	175	185	160	127	148	193
150	150-175	265	295	405	375	205	275	200	210	170			
175	175-200	295	320	460	435	235	315	225	235	195			
200	200-250	320	375	475	455	260	340	250	270	210			

Combinazione materiali standard - Standard materials Combination				
ITEM	DENOMINAZIONE DENOMINATION	B/B MATERIALE MATERIAL	B/316 MATERIALE MATERIAL	G/316 MATERIALE MATERIAL
01	Body	Bronze UNI EN1982 G-CuSn5Zn5Pb5	Bronze UNI EN1982 G-CuSn5Zn5Pb5	Cast iron UNI EN1561 EN-GJL-250
02	Bonnet	Bronze UNI EN1982 G-CuSn5Zn5Pb5	Bronze UNI EN1982 G-CuSn5Zn5Pb5	Cast iron UNI EN1561 EN-GJL-250
03	Body seat	Bronze UNI EN1982 G-CuSn5Zn5Pb5	Bronze UNI EN1982 G-CuSn5Zn5Pb5	Stainless steel AISI316 UNI EN10088
04	Disc (≤ DN80)	Bronze UNI EN1982 G-CuSn5Zn5Pb5	Stainless steel AISI316 UNI EN10088	Stainless steel AISI316 UNI EN10088
04	Disc (≥ DN100)	Bronze UNI EN1982 G-CuSn5Zn5Pb5	Stainless steel AISI316 UNI EN10088	Cast steel GP240-GH UNI EN10213 plus AISI316 facing welding
05	Stem	Brass CW617N (OT58)	Stainless steel AISI316 UNI EN10088	Stainless steel AISI316 UNI EN10088
06	Handwheel	Sheet of carbon steel	Sheet of carbon steel	Sheet of carbon steel
07	Handle	Steel A37 UNI EN10217-1	Steel A37 UNI EN10217-1	Steel A37 UNI EN10217-1
08	Gasket	Planiflex KG carbo/C PF81	Planiflex KG carbo/C PF81	Planiflex KG carbo/C PF81
09	Packing	Carbograph GR8800	Carbograph GR8800	Carbograph GR8800
10	Gland bushing	Brass CW509L (OT60)	Brass CW509L (OT60)	Bronze UNI EN1982 G-CuSn5Zn5Pb5

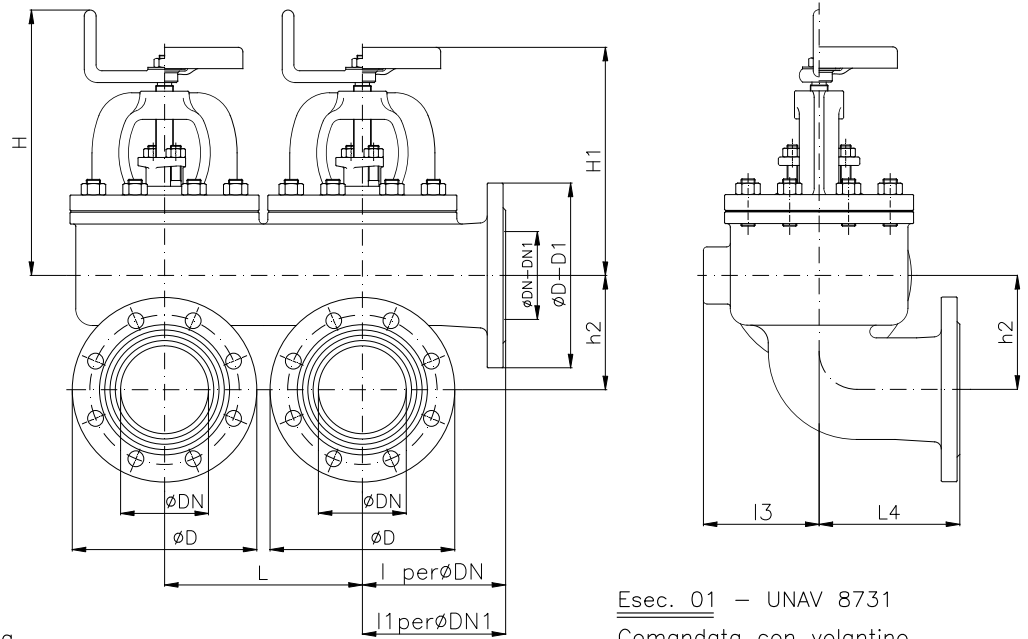
Nota: Combinazioni materiali non standard a richiesta
Note: Non standard materials combinations on request

Combinazione materiali standard - Standard materials Combination				
ITEM	DENOMINAZIONE DENOMINATION	G/B MATERIALE MATERIAL	GS/316 MATERIALE MATERIAL	GS/B MATERIALE MATERIAL
01	Body	Cast iron UNI EN1561 EN-GJL-250	Nodular cast iron EN-GJS-400-15U UNI EN1563	Nodular cast iron EN-GJS-400-15U UNI EN1563
02	Bonnet	Cast iron UNI EN1561 EN-GJL-250	Nodular cast iron EN-GJS-400-15U UNI EN1563	Nodular cast iron EN-GJS-400-15U UNI EN1563
03	Body seat	Bronze UNI EN1982 G-CuSn5Zn5Pb5	Stainless steel AISI316 UNI EN10088	Bronze UNI EN1982 G-CuSn5Zn5Pb5
04	Disc (≤ DN80)	Bronze UNI EN1982 G-CuSn5Zn5Pb5	Stainless steel AISI316 UNI EN10088	Bronze UNI EN1982 G-CuSn5Zn5Pb5
04	Disc (≥ DN100)	Bronze UNI EN1982 G-CuSn5Zn5Pb5	Cast steel GP240-GH UNI EN10213 plus AISI316 facing welding	Bronze UNI EN1982 G-CuSn5Zn5Pb5
05	Stem	Brass CW617N (OT58)	Stainless steel AISI316 UNI EN10088	Brass CW617N (OT58)
06	Handwheel	Sheet of carbon steel	Sheet of carbon steel	Sheet of carbon steel
07	Handle	Steel A37 UNI EN10217-1	Steel A37 UNI EN10217-1	Steel A37 UNI EN10217-1
08	Gasket	Planiflex KG carbo/C PF81	Planiflex KG carbo/C PF81	Planiflex KG carbo/C PF81
09	Packing	Carbograph GR8800	Carbograph GR8800	Carbograph GR8800
10	Gland bushing	Bronze UNI EN1982 G-CuSn5Zn5Pb5	Bronze UNI EN1982 G-CuSn5Zn5Pb5	Bronze UNI EN1982 G-CuSn5Zn5Pb5

Nota: Combinazioni materiali non standard a richiesta
Note: Non standard materials combinations on request



2 Elements



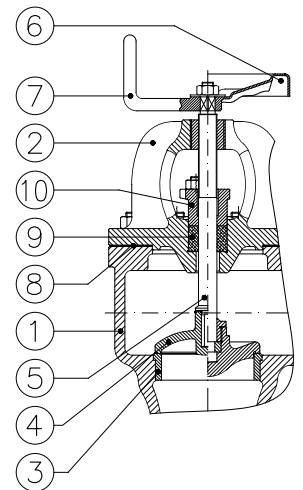
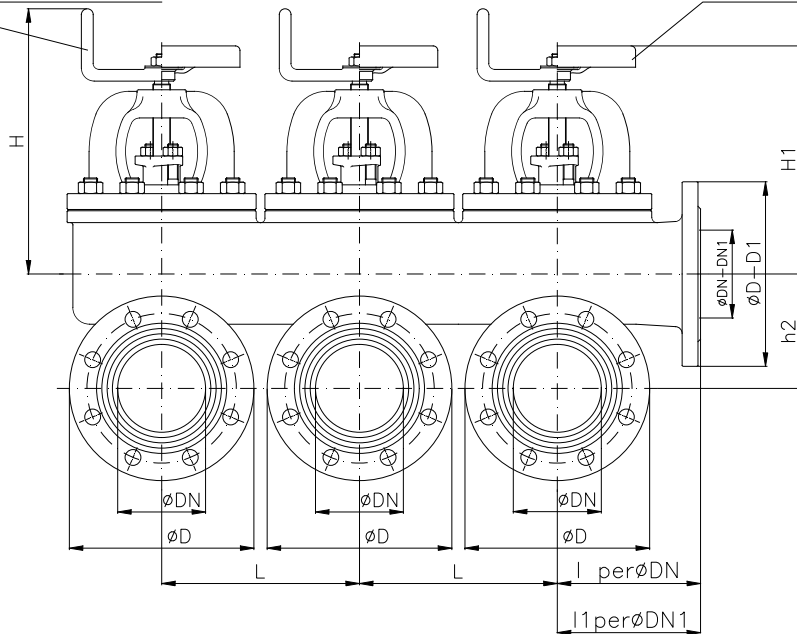
Esec. 02 - UNAV 8732

Semiatomatica con manovella
With loose disc and handle (SDNR)

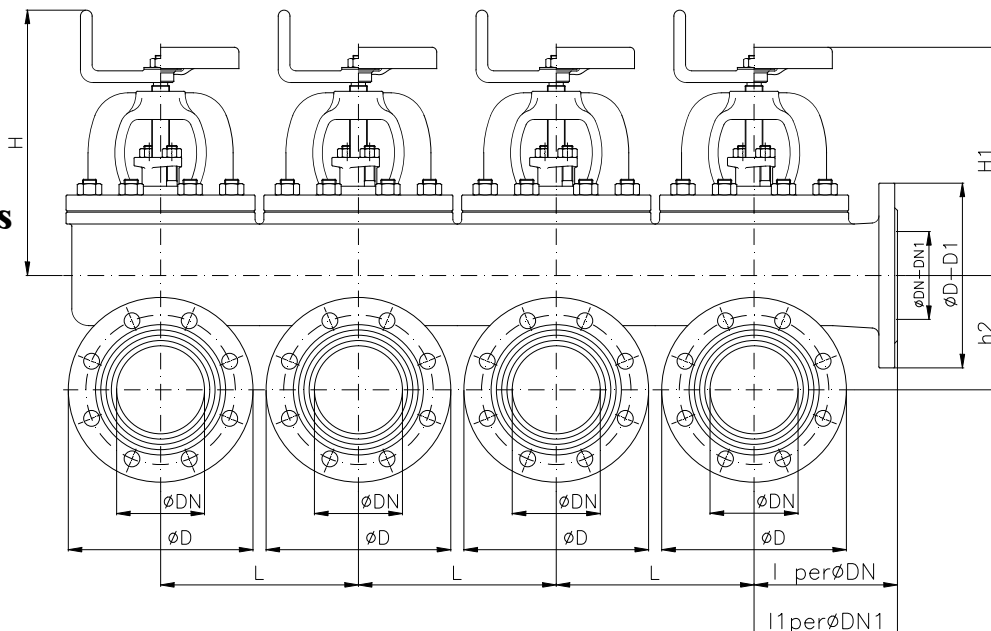
Esec. 01 - UNAV 8731

Comandata con volantino
With fixed disc and handwheel (SDSL)

3 Elements



4 Elements





DN (ASPIRAZIONE) (SUCTION)	DN1 (MANDATA) (DELIVERY)	D	D1	H (APERTA) (OPEN)	H1 (APERTA) (OPEN)	h2	L	L4	I	I1	I3 (~)	Weight (Kg) 2 elements	Weight (Kg) 3 elements	Weight (Kg) 4 elements
40	40-50	130	140	240	210	70	145	95	95	100	80			45
50	50-65	140	160	250	220	80	145	110	100	105	90			52
65	65-80	160	190	300	260	100	195	125	115	125	100		61	
80	80-100	190	210	305	270	110	195	150	130	150	125	56	80	105
100	100-125	210	240	340	305	130	225	160	150	160	140	75	110	142
125	125-150	240	265	380	350	155	255	180	175	185	160			
150	150-175	265	295	405	375	180	275	195	200	210	170			
175	175-200	295	320	460	435	210	315	220	225	235	195			
200	200-250	320	375	475	455	230	340	235	250	270	210			

Combinazione materiali standard - Standard materials Combination				
ITEM	DENOMINAZIONE DENOMINATION	B/B MATERIALE MATERIAL	B/316 MATERIALE MATERIAL	G/316 MATERIALE MATERIAL
01	Body	Bronze UNI EN1982 G-CuSn5Zn5Pb5	Bronze UNI EN1982 G-CuSn5Zn5Pb5	Cast iron UNI EN1561 EN-GJL-250
02	Bonnet	Bronze UNI EN1982 G-CuSn5Zn5Pb5	Bronze UNI EN1982 G-CuSn5Zn5Pb5	Cast iron UNI EN1561 EN-GJL-250
03	Body seat	Bronze UNI EN1982 G-CuSn5Zn5Pb5	Bronze UNI EN1982 G-CuSn5Zn5Pb5	Stainless steel AISI316 UNI EN10088
04	Disc (\leq DN80)	Bronze UNI EN1982 G-CuSn5Zn5Pb5	Stainless steel AISI316 UNI EN10088	Stainless steel AISI316 UNI EN10088
04	Disc (\geq DN100)	Bronze UNI EN1982 G-CuSn5Zn5Pb5	Stainless steel AISI316 UNI EN10088	Cast steel GP240-GH UNI EN10213 plus AISI316 facing welding
05	Stem	Brass CW617N (OT58)	Stainless steel AISI316 UNI EN10088	Stainless steel AISI316 UNI EN10088
06	Handwheel	Sheet of carbon steel	Sheet of carbon steel	Sheet of carbon steel
07	Handle	Steel A37 UNI EN10217-1	Steel A37 UNI EN10217-1	Steel A37 UNI EN10217-1
08	Gasket	Planiflex KG carbo/C PF81	Planiflex KG carbo/C PF81	Planiflex KG carbo/C PF81
09	Packing	Carbograph GR8800	Carbograph GR8800	Carbograph GR8800
10	Gland bushing	Brass CW509L (OT60)	Brass CW509L (OT60)	Bronze UNI EN1982 G-CuSn5Zn5Pb5

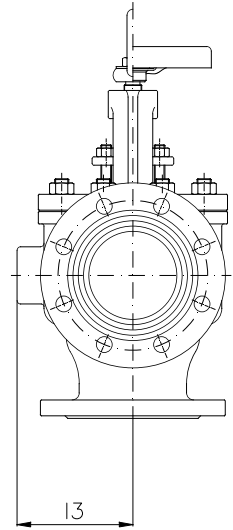
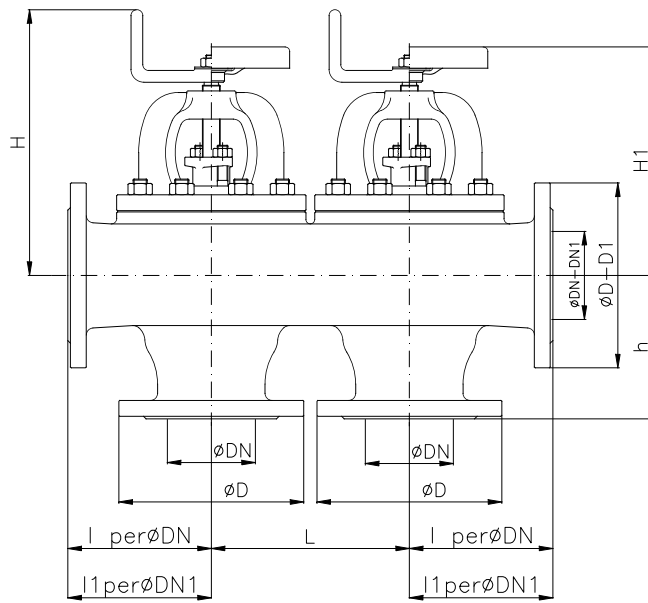
Nota: Combinazioni materiali non standard a richiesta
Note: Non standard materials combinations on request

Combinazione materiali standard - Standard materials Combination				
ITEM	DENOMINAZIONE DENOMINATION	G/B MATERIALE MATERIAL	GS/316 MATERIALE MATERIAL	GS/B MATERIALE MATERIAL
01	Body	Cast iron UNI EN1561 EN-GJL-250	Nodular cast iron EN-GJS-400-15U UNI EN1563	Nodular cast iron EN-GJS-400-15U UNI EN1563
02	Bonnet	Cast iron UNI EN1561 EN-GJL-250	Nodular cast iron EN-GJS-400-15U UNI EN1563	Nodular cast iron EN-GJS-400-15U UNI EN1563
03	Body seat	Bronze UNI EN1982 G-CuSn5Zn5Pb5	Stainless steel AISI316 UNI EN10088	Bronze UNI EN1982 G-CuSn5Zn5Pb5
04	Disc (\leq DN80)	Bronze UNI EN1982 G-CuSn5Zn5Pb5	Stainless steel AISI316 UNI EN10088	Bronze UNI EN1982 G-CuSn5Zn5Pb5
04	Disc (\geq DN100)	Bronze UNI EN1982 G-CuSn5Zn5Pb5	Cast steel GP240-GH UNI EN10213 plus AISI316 facing welding	Bronze UNI EN1982 G-CuSn5Zn5Pb5
05	Stem	Brass CW617N (OT58)	Stainless steel AISI316 UNI EN10088	Brass CW617N (OT58)
06	Handwheel	Sheet of carbon steel	Sheet of carbon steel	Sheet of carbon steel
07	Handle	Steel A37 UNI EN10217-1	Steel A37 UNI EN10217-1	Steel A37 UNI EN10217-1
08	Gasket	Planiflex KG carbo/C PF81	Planiflex KG carbo/C PF81	Planiflex KG carbo/C PF81
09	Packing	Carbograph GR8800	Carbograph GR8800	Carbograph GR8800
10	Gland bushing	Bronze UNI EN1982 G-CuSn5Zn5Pb5	Bronze UNI EN1982 G-CuSn5Zn5Pb5	Bronze UNI EN1982 G-CuSn5Zn5Pb5

Nota: Combinazioni materiali non standard a richiesta
Note: Non standard materials combinations on request



2 Elements



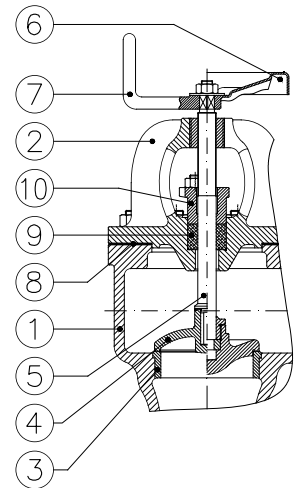
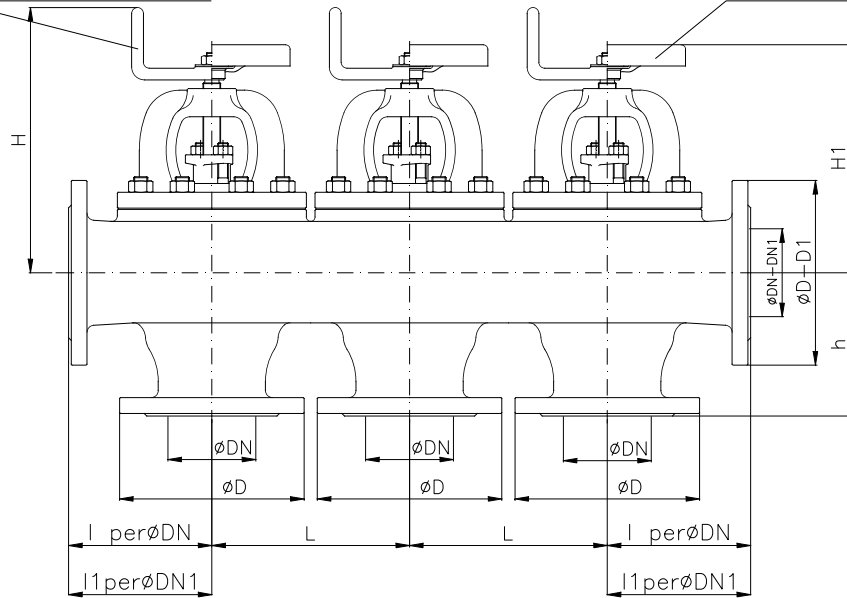
Esec. 02 - UNAV 8732

Semiautomatica con manovella
With loose disc and handle (SDNR)

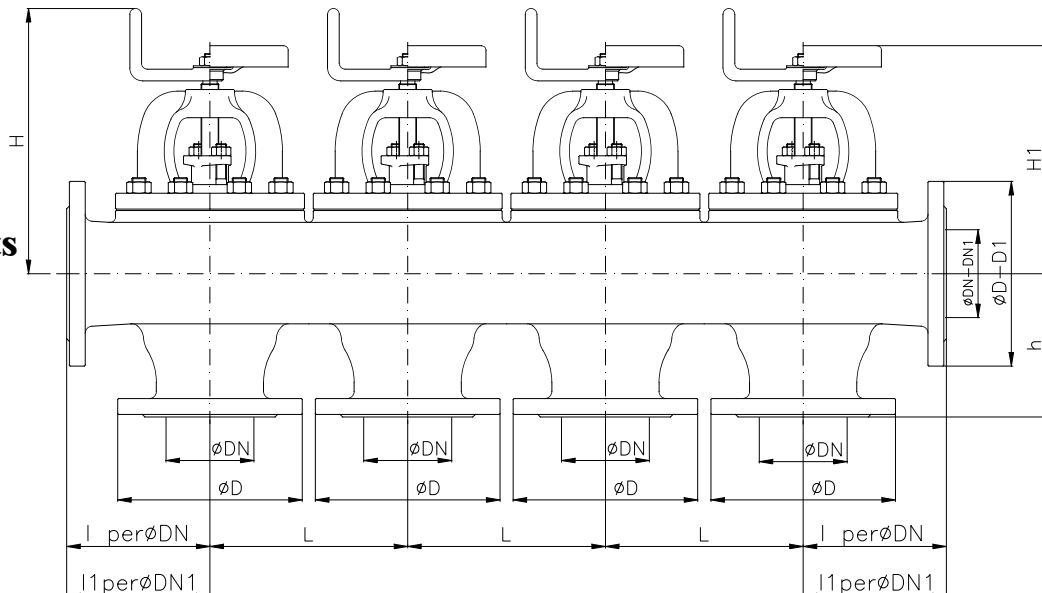
Esec. 01 - UNAV 8731

Comandata con volantino
With fixed disc and handwheel (SDSL)

3 Elements



4 Elements





DN (ASPIRAZIONE) (SUCTION)	DN1 (MANDATA) (DELIVERY)	D	D1	H (APERTA) (OPEN)	H1 (APERTA) (OPEN)	h	L	l	l1	I3 (-)	Weight (Kg) 2 elements	Weight (Kg) 3 elements	Weight (Kg) 4 elements
40	40-50	130	140	240	210	100	145	95	100	80	26	36	48
50	50-65	140	160	250	220	105	145	100	105	90	28	38	51
65	65-80	160	190	300	260	130	195	115	125	100	40	60	79
80	80-100	190	210	305	270	140	195	130	150	125		78	98
100	100-125	210	240	340	305	160	225	150	160	140		110	145
125	125-150	240	265	380	350	180	255	175	185	160		154	
150	150-175	265	295	405	375	205	275	200	210	170			
175	175-200	295	320	460	435	235	315	225	235	195			
200	200-250	320	375	475	455	260	340	250	270	210			

Combinazione materiali standard - Standard materials Combination				
ITEM	DENOMINAZIONE DENOMINATION	B/B MATERIALE MATERIAL	B/316 MATERIALE MATERIAL	G/316 MATERIALE MATERIAL
01	Body	Bronze UNI EN1982 G-CuSn5Zn5Pb5	Bronze UNI EN1982 G-CuSn5Zn5Pb5	Cast iron UNI EN1561 EN-GJL-250
02	Bonnet	Bronze UNI EN1982 G-CuSn5Zn5Pb5	Bronze UNI EN1982 G-CuSn5Zn5Pb5	Cast iron UNI EN1561 EN-GJL-250
03	Body seat	Bronze UNI EN1982 G-CuSn5Zn5Pb5	Bronze UNI EN1982 G-CuSn5Zn5Pb5	Stainless steel AISI316 UNI EN10088
04	Disc (≤ DN80)	Bronze UNI EN1982 G-CuSn5Zn5Pb5	Stainless steel AISI316 UNI EN10088	Stainless steel AISI316 UNI EN10088
04	Disc (≥ DN100)	Bronze UNI EN1982 G-CuSn5Zn5Pb5	Stainless steel AISI316 UNI EN10088	Cast steel GP240-GH UNI EN10213 plus AISI316 facing welding
05	Stem	Brass CW617N (OT58)	Stainless steel AISI316 UNI EN10088	Stainless steel AISI316 UNI EN10088
06	Handwheel	Sheet of carbon steel	Sheet of carbon steel	Sheet of carbon steel
07	Handle	Steel A37 UNI EN10217-1	Steel A37 UNI EN10217-1	Steel A37 UNI EN10217-1
08	Gasket	Planiflex KG carbo/C PF81	Planiflex KG carbo/C PF81	Planiflex KG carbo/C PF81
09	Packing	Carbograph GR8800	Carbograph GR8800	Carbograph GR8800
10	Gland bushing	Brass CW509L (OT60)	Brass CW509L (OT60)	Bronze UNI EN1982 G-CuSn5Zn5Pb5

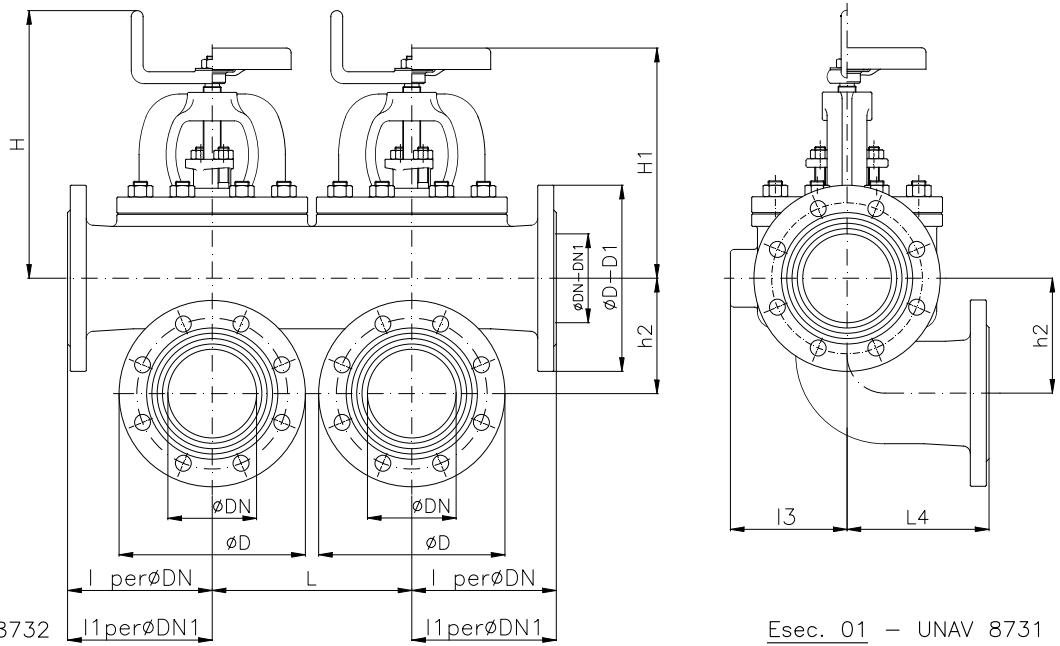
Nota: Combinazioni materiali non standard a richiesta
Note: Non standard materials combinations on request

Combinazione materiali standard - Standard materials Combination				
ITEM	DENOMINAZIONE DENOMINATION	G/B MATERIALE MATERIAL	GS/316 MATERIALE MATERIAL	GS/B MATERIALE MATERIAL
01	Body	Cast iron UNI EN1561 EN-GJL-250	Nodular cast iron EN-GJS-400-15U UNI EN1563	Nodular cast iron EN-GJS-400-15U UNI EN1563
02	Bonnet	Cast iron UNI EN1561 EN-GJL-250	Nodular cast iron EN-GJS-400-15U UNI EN1563	Nodular cast iron EN-GJS-400-15U UNI EN1563
03	Body seat	Bronze UNI EN1982 G-CuSn5Zn5Pb5	Stainless steel AISI316 UNI EN10088	Bronze UNI EN1982 G-CuSn5Zn5Pb5
04	Disc (≤ DN80)	Bronze UNI EN1982 G-CuSn5Zn5Pb5	Stainless steel AISI316 UNI EN10088	Bronze UNI EN1982 G-CuSn5Zn5Pb5
04	Disc (≥ DN100)	Bronze UNI EN1982 G-CuSn5Zn5Pb5	Cast steel GP240-GH UNI EN10213 plus AISI316 facing welding	Bronze UNI EN1982 G-CuSn5Zn5Pb5
05	Stem	Brass CW617N (OT58)	Stainless steel AISI316 UNI EN10088	Brass CW617N (OT58)
06	Handwheel	Sheet of carbon steel	Sheet of carbon steel	Sheet of carbon steel
07	Handle	Steel A37 UNI EN10217-1	Steel A37 UNI EN10217-1	Steel A37 UNI EN10217-1
08	Gasket	Planiflex KG carbo/C PF81	Planiflex KG carbo/C PF81	Planiflex KG carbo/C PF81
09	Packing	Carbograph GR8800	Carbograph GR8800	Carbograph GR8800
10	Gland bushing	Bronze UNI EN1982 G-CuSn5Zn5Pb5	Bronze UNI EN1982 G-CuSn5Zn5Pb5	Bronze UNI EN1982 G-CuSn5Zn5Pb5

Nota: Combinazioni materiali non standard a richiesta
Note: Non standard materials combinations on request



2 Elements



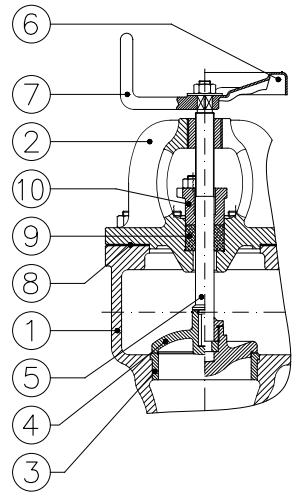
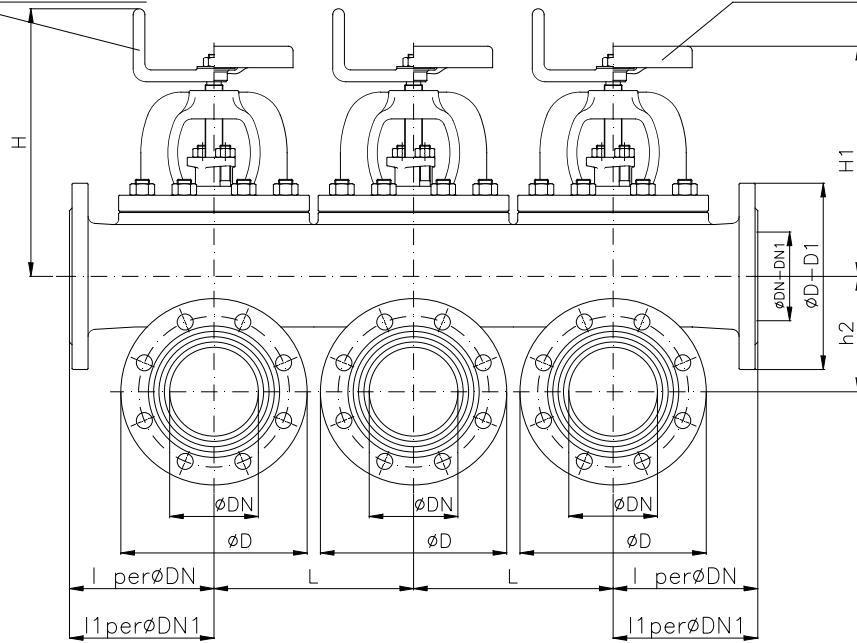
Esec. 02 - UNAV 8732

Semiamomatica con manovella
With loose disc and handle (SDNR)

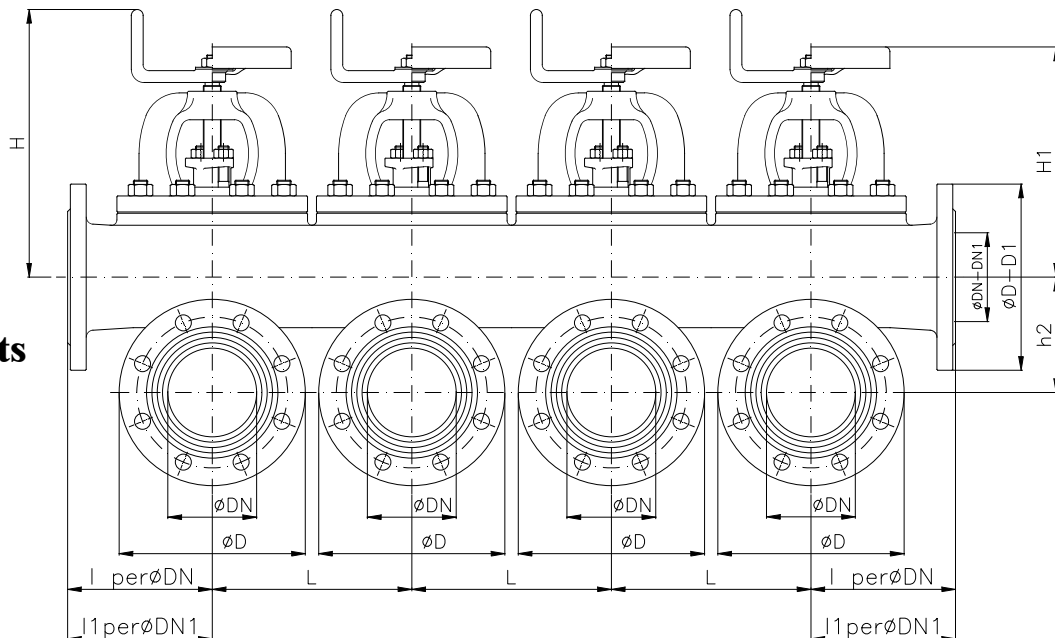
Esec. 01 - UNAV 8731

Comandata con volantino
With fixed disc and handwheel (SDSL)

3 Elements



4 Elements





DN (ASPIRAZIONE) (SUCTION)	DN1 (MANDATA) (DELIVERY)	D	D1	H (APERTA) (OPEN)	H1 (APERTA) (OPEN)	h2	L	L4	l	l1	I3 (~)	Weight (Kg) 2 elements	Weight (Kg) 3 elements	Weight (Kg) 4 elements
40	40-50	130	140	240	210	70	145	95	95	100	80	25		
50	50-65	140	160	250	220	80	145	110	100	105	90	28	42	51
65	65-80	160	190	300	260	100	195	125	115	125	100	42	63	82
80	80-100	190	210	305	270	110	195	150	130	150	125	54		
100	100-125	210	240	340	305	130	225	160	150	160	140	94		
125	125-150	240	265	380	350	155	255	180	175	185	160	117		
150	150-175	265	295	405	375	180	275	195	200	210	170			
175	175-200	295	320	460	435	210	315	220	225	235	195	200		
200	200-250	320	375	475	455	230	340	235	250	270	210			

Combinazione materiali standard - Standard materials Combination				
ITEM	DENOMINAZIONE DENOMINATION	B/B MATERIALE MATERIAL	B/316 MATERIALE MATERIAL	G/316 MATERIALE MATERIAL
01	Body	Bronze UNI EN1982 G-CuSn5Zn5Pb5	Bronze UNI EN1982 G-CuSn5Zn5Pb5	Cast iron UNI EN1561 EN-GJL-250
02	Bonnet	Bronze UNI EN1982 G-CuSn5Zn5Pb5	Bronze UNI EN1982 G-CuSn5Zn5Pb5	Cast iron UNI EN1561 EN-GJL-250
03	Body seat	Bronze UNI EN1982 G-CuSn5Zn5Pb5	Bronze UNI EN1982 G-CuSn5Zn5Pb5	Stainless steel AISI316 UNI EN10088
04	Disc (\leq DN80)	Bronze UNI EN1982 G-CuSn5Zn5Pb5	Stainless steel AISI316 UNI EN10088	Stainless steel AISI316 UNI EN10088
04	Disc (\geq DN100)	Bronze UNI EN1982 G-CuSn5Zn5Pb5	Stainless steel AISI316 UNI EN10088	Cast steel GP240-GH UNI EN10213 plus AISI316 facing welding
05	Stem	Brass CW617N (OT58)	Stainless steel AISI316 UNI EN10088	Stainless steel AISI316 UNI EN10088
06	Handwheel	Sheet of carbon steel	Sheet of carbon steel	Sheet of carbon steel
07	Handle	Steel A37 UNI EN10217-1	Steel A37 UNI EN10217-1	Steel A37 UNI EN10217-1
08	Gasket	Planiflex KG carbo/C PF81	Planiflex KG carbo/C PF81	Planiflex KG carbo/C PF81
09	Packing	Carbograph GR8800	Carbograph GR8800	Carbograph GR8800
10	Gland bushing	Brass CW509L (OT60)	Brass CW509L (OT60)	Bronze UNI EN1982 G-CuSn5Zn5Pb5

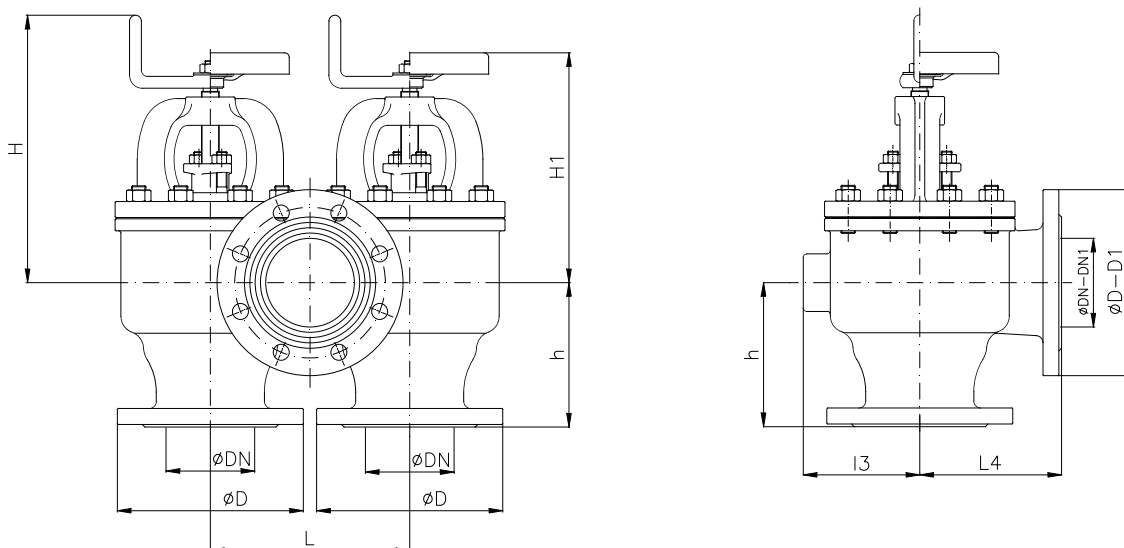
Nota: Combinazioni materiali non standard a richiesta
Note: Non standard materials combinations on request

Combinazione materiali standard - Standard materials Combination				
ITEM	DENOMINAZIONE DENOMINATION	G/B MATERIALE MATERIAL	GS/316 MATERIALE MATERIAL	GS/B MATERIALE MATERIAL
01	Body	Cast iron UNI EN1561 EN-GJL-250	Nodular cast iron EN-GJS-400-15U UNI EN1563	Nodular cast iron EN-GJS-400-15U UNI EN1563
02	Bonnet	Cast iron UNI EN1561 EN-GJL-250	Nodular cast iron EN-GJS-400-15U UNI EN1563	Nodular cast iron EN-GJS-400-15U UNI EN1563
03	Body seat	Bronze UNI EN1982 G-CuSn5Zn5Pb5	Stainless steel AISI316 UNI EN10088	Bronze UNI EN1982 G-CuSn5Zn5Pb5
04	Disc (\leq DN80)	Bronze UNI EN1982 G-CuSn5Zn5Pb5	Stainless steel AISI316 UNI EN10088	Bronze UNI EN1982 G-CuSn5Zn5Pb5
04	Disc (\geq DN100)	Bronze UNI EN1982 G-CuSn5Zn5Pb5	Cast steel GP240-GH UNI EN10213 plus AISI316 facing welding	Bronze UNI EN1982 G-CuSn5Zn5Pb5
05	Stem	Brass CW617N (OT58)	Stainless steel AISI316 UNI EN10088	Brass CW617N (OT58)
06	Handwheel	Sheet of carbon steel	Sheet of carbon steel	Sheet of carbon steel
07	Handle	Steel A37 UNI EN10217-1	Steel A37 UNI EN10217-1	Steel A37 UNI EN10217-1
08	Gasket	Planiflex KG carbo/C PF81	Planiflex KG carbo/C PF81	Planiflex KG carbo/C PF81
09	Packing	Carbograph GR8800	Carbograph GR8800	Carbograph GR8800
10	Gland bushing	Bronze UNI EN1982 G-CuSn5Zn5Pb5	Bronze UNI EN1982 G-CuSn5Zn5Pb5	Bronze UNI EN1982 G-CuSn5Zn5Pb5

Nota: Combinazioni materiali non standard a richiesta
Note: Non standard materials combinations on request



2 Elements



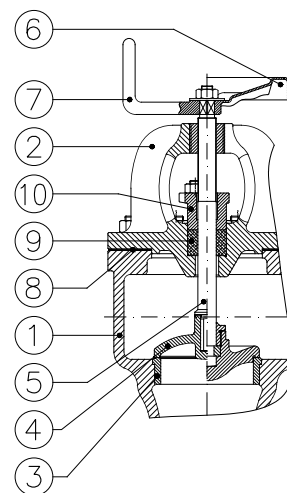
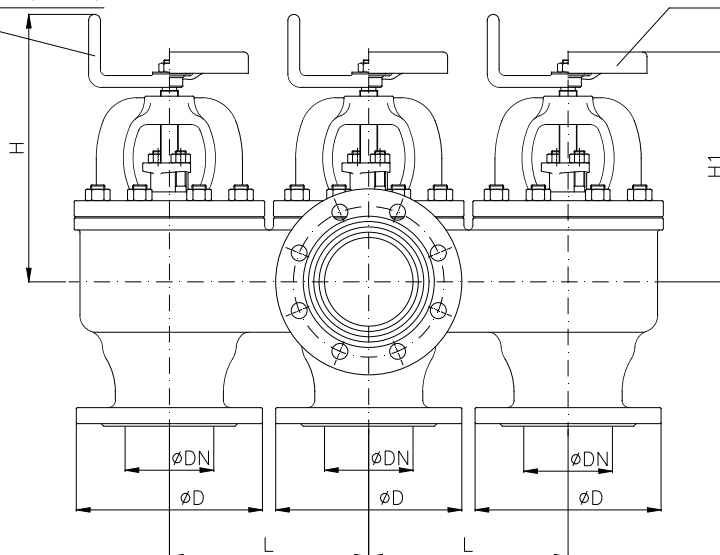
Esec. 02 - UNAV 8732

Semiautomatica con manovella
With loose disc and handle (SDNR)

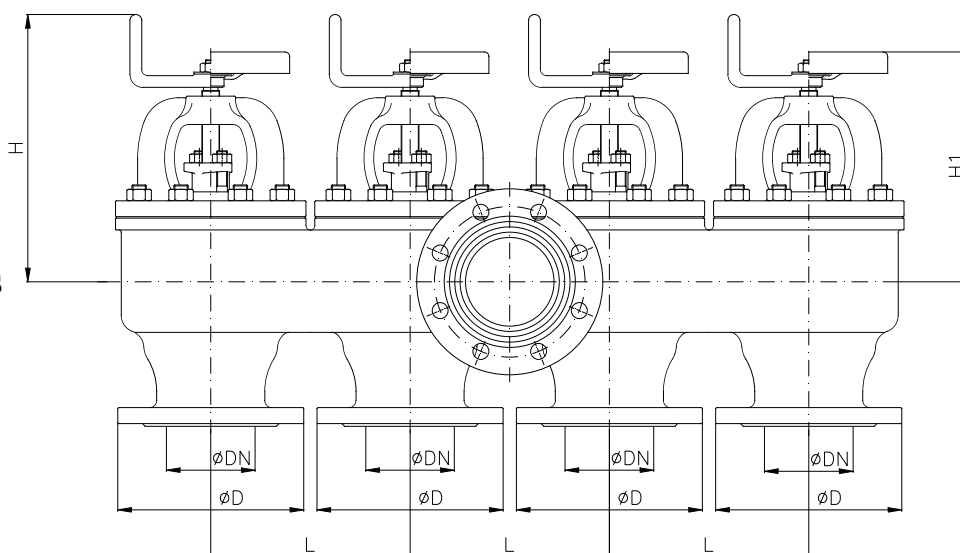
Esec. 01 - UNAV 8731

Comandata con volantino
With fixed disc and handwheel (SDSL)

3 Elements



4 Elements





DN (ASPIRAZIONE) (SUCTION)	DN1 (MANDATA) (DELIVERY)	D	D1	H (APERTA) (OPEN)	H1 (APERTA) (OPEN)	h	L	L4	I3 (-)	Weight (Kg) 2 elements	Weight (Kg) 3 elements	Weight (Kg) 4 elements
40	40-50	130	140	240	210	100	145	95	80	22	31	
50	50-65	140	160	250	220	105	145	110	90	26	35	46
65	65-80	160	190	300	260	130	195	125	100	38	54	72
80	80-100	190	210	305	270	140	195	150	125	47	75	99
100	100-125	210	240	340	305	160	225	160	140	70	105	123
125	125-150	240	265	380	350	180	255	180	160	101	143	
150	150-175	265	295	405	375	205	275	195	170	118	176	
175	175-200	295	320	460	435	235	315	220	195	160	235	
200	200-250	320	375	475	455	260	340	235	210			

Combinazione materiali standard - Standard materials Combination				
		B/B	B/316	G/316
ITEM	DENOMINAZIONE DENOMINATION	MATERIALE MATERIAL	MATERIALE MATERIAL	MATERIALE MATERIAL
01	Body	Bronze UNI EN1982 G-CuSn5Zn5Pb5	Bronze UNI EN1982 G-CuSn5Zn5Pb5	Cast iron UNI EN1561 EN-GJL-250
02	Bonnet	Bronze UNI EN1982 G-CuSn5Zn5Pb5	Bronze UNI EN1982 G-CuSn5Zn5Pb5	Cast iron UNI EN1561 EN-GJL-250
03	Body seat	Bronze UNI EN1982 G-CuSn5Zn5Pb5	Bronze UNI EN1982 G-CuSn5Zn5Pb5	Stainless steel AISI316 UNI EN10088
04	Disc (\leq DN80)	Bronze UNI EN1982 G-CuSn5Zn5Pb5	Stainless steel AISI316 UNI EN10088	Stainless steel AISI316 UNI EN10088
04	Disc (\geq DN100)	Bronze UNI EN1982 G-CuSn5Zn5Pb5	Stainless steel AISI316 UNI EN10088	Cast steel GP240-GH UNI EN10213 plus AISI316 facing welding
05	Stem	Brass CW617N (OT58)	Stainless steel AISI316 UNI EN10088	Stainless steel AISI316 UNI EN10088
06	Handwheel	Sheet of carbon steel	Sheet of carbon steel	Sheet of carbon steel
07	Handle	Steel A37 UNI EN10217-1	Steel A37 UNI EN10217-1	Steel A37 UNI EN10217-1
08	Gasket	Planiflex KG carbo/C PF81	Planiflex KG carbo/C PF81	Planiflex KG carbo/C PF81
09	Packing	Carbograph GR8800	Carbograph GR8800	Carbograph GR8800
10	Gland bushing	Brass CW509L (OT60)	Brass CW509L (OT60)	Bronze UNI EN1982 G-CuSn5Zn5Pb5
Nota: Combinazioni materiali non standard a richiesta				
Note: Non standard materials combinations on request				

Combinazione materiali standard - Standard materials Combination				
		G/B	GS/316	GS/B
ITEM	DENOMINAZIONE DENOMINATION	MATERIALE MATERIAL	MATERIALE MATERIAL	MATERIALE MATERIAL
01	Body	Cast iron UNI EN1561 EN-GJL-250	Nodular cast iron EN-GJS-400-15U UNI EN1563	Nodular cast iron EN-GJS-400-15U UNI EN1563
02	Bonnet	Cast iron UNI EN1561 EN-GJL-250	Nodular cast iron EN-GJS-400-15U UNI EN1563	Nodular cast iron EN-GJS-400-15U UNI EN1563
03	Body seat	Bronze UNI EN1982 G-CuSn5Zn5Pb5	Stainless steel AISI316 UNI EN10088	Bronze UNI EN1982 G-CuSn5Zn5Pb5
04	Disc (\leq DN80)	Bronze UNI EN1982 G-CuSn5Zn5Pb5	Stainless steel AISI316 UNI EN10088	Bronze UNI EN1982 G-CuSn5Zn5Pb5
04	Disc (\geq DN100)	Bronze UNI EN1982 G-CuSn5Zn5Pb5	Cast steel GP240-GH UNI EN10213 plus AISI316 facing welding	Bronze UNI EN1982 G-CuSn5Zn5Pb5
05	Stem	Brass CW617N (OT58)	Stainless steel AISI316 UNI EN10088	Brass CW617N (OT58)
06	Handwheel	Sheet of carbon steel	Sheet of carbon steel	Sheet of carbon steel
07	Handle	Steel A37 UNI EN10217-1	Steel A37 UNI EN10217-1	Steel A37 UNI EN10217-1
08	Gasket	Planiflex KG carbo/C PF81	Planiflex KG carbo/C PF81	Planiflex KG carbo/C PF81
09	Packing	Carbograph GR8800	Carbograph GR8800	Carbograph GR8800
10	Gland bushing	Bronze UNI EN1982 G-CuSn5Zn5Pb5	Bronze UNI EN1982 G-CuSn5Zn5Pb5	Bronze UNI EN1982 G-CuSn5Zn5Pb5
Nota: Combinazioni materiali non standard a richiesta				
Note: Non standard materials combinations on request				