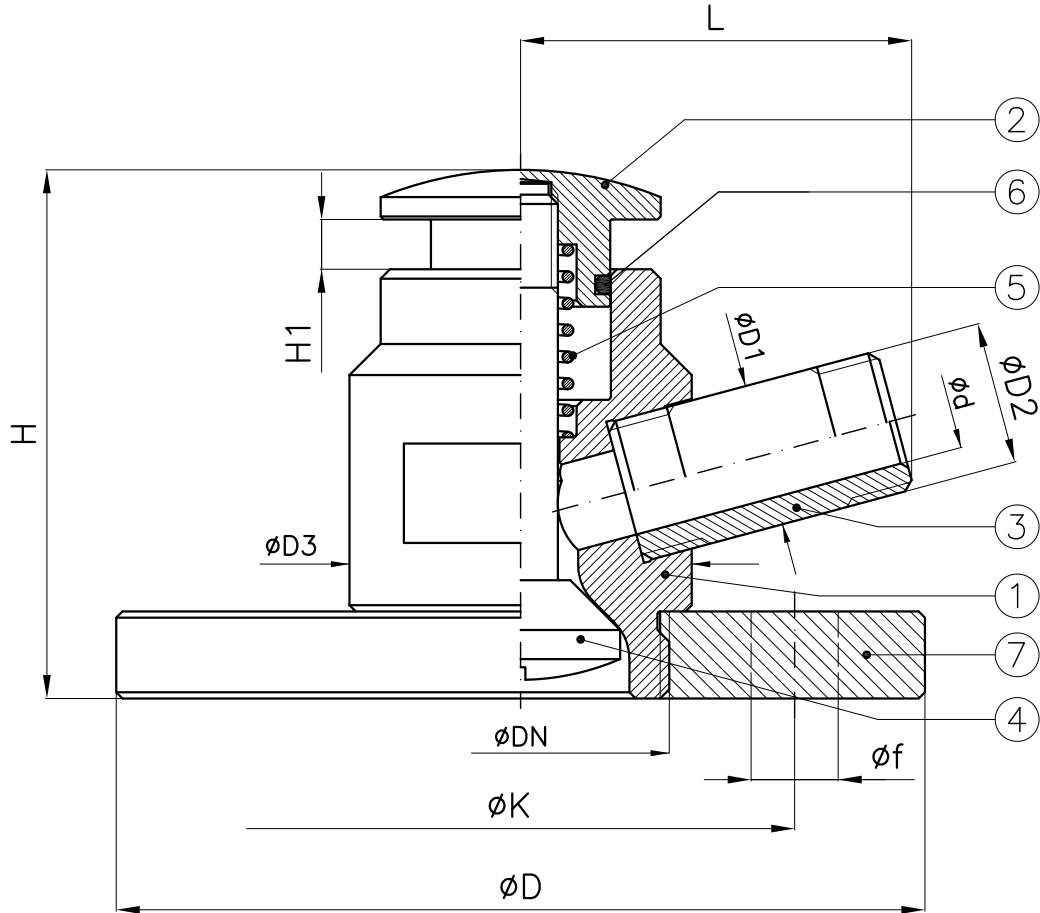




**Conform to:
UNI EN1092**



DN	D1	D2 (Gas)	D3	d	H	H1	L	PN6				PN10				PN16						
								D	K	f	Holes No. f	Weight (Kg)	D	K	f	Holes No. f	Weight (Kg)	D	K	f	Holes No. f	Weight (Kg)
1/2"	14	1/4"	28	8.5	68	5	36	80	55	11	4	0.7	95	65	14	4	0.9	95	65	14	4	0.9
3/4"	18	3/8"	32	10	76	6	46	90	65	11	4	1.05	105	75	14	4	1.3	105	75	14	4	1.3
1"	18	3/8"	36	10	80	6	49	100	75	11	4	1.5	115	85	14	4	1.8	115	85	14	4	1.8
1"1/4	23	5/8"	50	13	86	7	59	120	90	14	4	2.5	140	100	18	4	3.1	140	100	18	4	3.1
1"1/2	23	5/8"	55	14	91	8	62.5	130	100	14	4	3.1	150	110	18	4	3.7	150	110	18	4	3.7

Combinazione materiali standard - Standard materials Combination			
ITEM	DENOMINAZIONE DENOMINATION	0/0	316/316
		MATERIALE MATERIAL	MATERIALE MATERIAL
01	Body	Brass CW617N (OT58)	Stainless steel AISI316 UNI EN10088
02	Pushbutton	Brass CW617N (OT58)	Stainless steel AISI316 UNI EN10088
03	Nipple	Brass CW617N (OT58)	Stainless steel AISI316 UNI EN10088
04	Stem	Brass CW617N (OT58)	Stainless steel AISI316 UNI EN10088
05	Spring	Steel UNI EN10270	Stainless steel UNI EN10151
06	Gasket	VITON	VITON
07	Flange	Brass CW617N (OT58)	Stainless steel AISI316 UNI EN10088

Nota: Combinazioni materiali non standard a richiesta
Note: Non standard materials combinations on request