



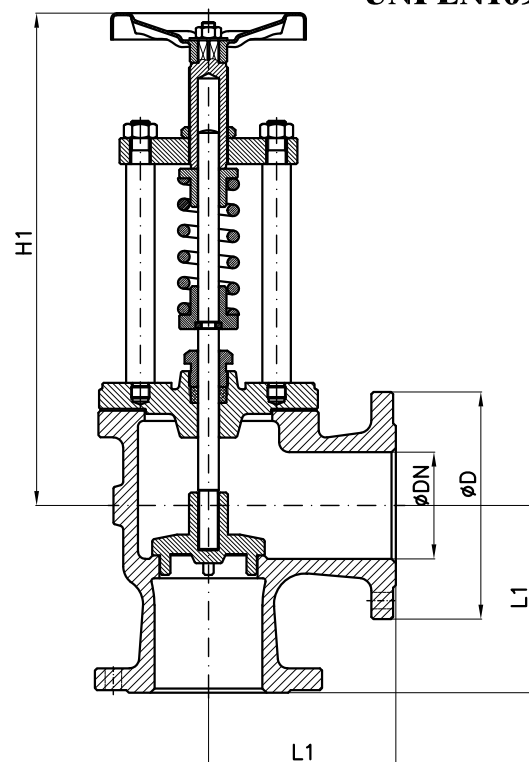
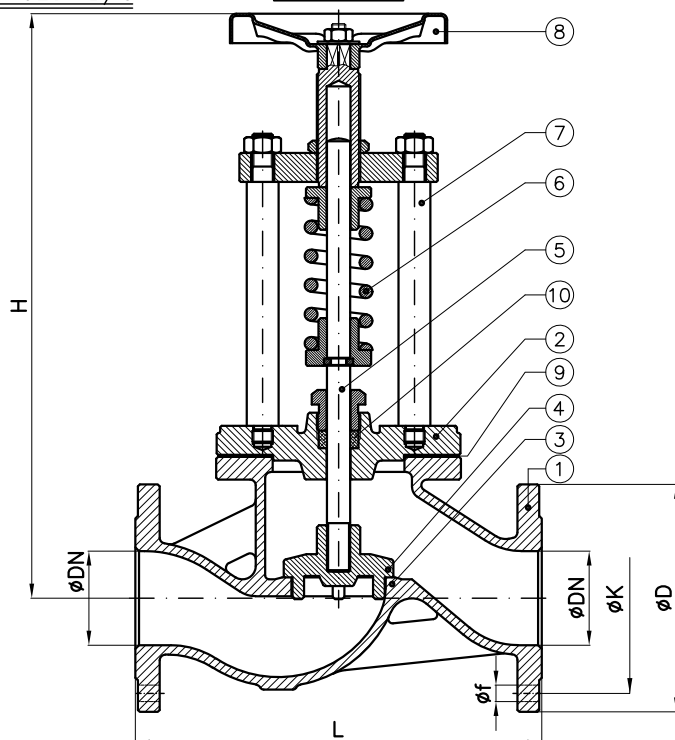
RF FLANGES: A/GS

FF FLANGES: B/G

Exec. VD

Exec. AR

Conform to:
UNI EN1092



Coperchio avvitato per valvole PN10M.M.I. e PN6 DN20-32
Scruwed bonnet for valves NP10 Italian Navy and NP6 ND20-32

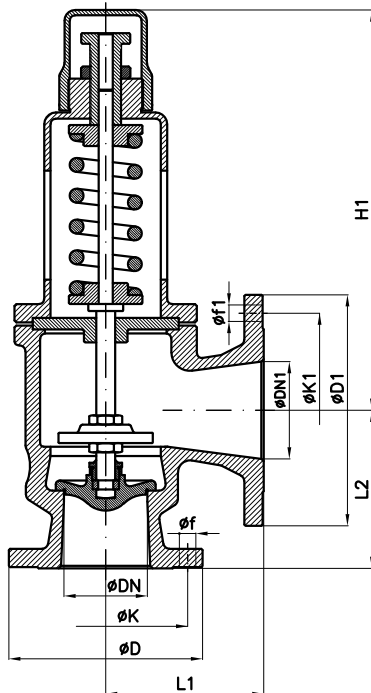
DN	L			H	Weight (Kg)	L1			H1	Weight (Kg)	PN6				PN10M.M.I.				PN16			
	PN6	PN10 M.M.I.	PN16			PN6	PN10 M.M.I.	PN16			D	K	f	Holes No. f	D	K	f	Holes No. f	D	K	f	Holes No. f
20	150	120	150	305	7	70	55	85			90	65	11	4	90	65	14	4	105	75	14	4
25	160	130	160			75	60	90	365		100	75	11	4	95	70	14	4	115	85	14	4
32	180	140	180	325	8	80	65	105	370	14	120	90	14	4	100	75	14	4	140	100	18	4
40	200	180	200	355	14.5	95	75	115	375	15	130	100	14	4	110	85	14	4	150	110	18	4
50	230	210	230	460	15	100	85	125	420		140	110	14	4	120	95	14	4	165	125	18	4
65	290	-	290	530	28	120	-	145		24	160	130	14	4	-	-	-	-	185	145	18	4
70	-	260	-			-	105	-	475		-	-	-	-	140	115	14	6	-	-	-	-
80	310	280	310	615	36	130	110	155	480	30	190	150	18	4	155	130	14	8	200	160	18	8
100	350	330	350		50	150	130	175		45	210	170	18	4	175	150	14	8	220	180	18	8
125	400	390	400	705		175	145	200		56	240	200	18	8	200	175	14	12	250	210	18	8
150	480	450	480			200	160	225			265	225	18	8	230	205	14	12	285	240	22	8
175	550	530	550			230	190	250			295	255	18	8	270	240	18	12	315	270	22	8
200	600	580	600			250	220	275			320	280	18	8	295	265	18	12	340	295	22	12

Combinazione materiali standard - Standard materials Combination					
ITEM	DENOMINAZIONE MATERIAL	A/316 MATERIALE MATERIAL	B/B MATERIALE MATERIAL	G/316 MATERIALE MATERIAL	GS/316 MATERIALE MATERIAL
01	Body	Cast steel GP240-GH UNI EN10213	Bronze UNI EN1982 G-CuSn5Zn5Pb5	Cast iron UNI EN1561 EN-GJL-250	Nodular cast iron EN-GJS-400-15U UNI EN1563
02	Bonnet	Steel Fe430B(S275JR) UNI EN10025	Bronze UNI EN1982 G-CuSn5Zn5Pb5	Steel Fe430B(S275JR) UNI EN10025	Steel Fe430B(S275JR) UNI EN10025
03	Body seat	Stainless steel AISI316 UNI EN10088	Bronze UNI EN1982 G-CuSn5Zn5Pb5	Stainless steel AISI316 UNI EN10088	Stainless steel AISI316 UNI EN10088
04	Disc (≤ DN80)	Stainless steel AISI316 UNI EN10088	Bronze UNI EN1982 G-CuSn5Zn5Pb5	Stainless steel AISI316 UNI EN10088	Stainless steel AISI316 UNI EN10088
04	Disc (≥ DN100)	Cast steel GP240-GH UNI EN10213 plus AISI316 facing welding	Bronze UNI EN1982 G-CuSn5Zn5Pb5	Cast steel GP240-GH UNI EN10213 plus AISI316 facing welding	Cast steel GP240-GH UNI EN10213 plus AISI316 facing welding
05	Stem	Stainless steel AISI316 UNI EN10088	Stainless steel AISI316 UNI EN10088	Stainless steel AISI316 UNI EN10088	Stainless steel AISI316 UNI EN10088
06	Spring	Steel UNI EN10270	Steel UNI EN10270	Steel UNI EN10270	Steel UNI EN10270
07	Columns	Carbon steel GE240 UNI EN10293	Brass CW617N (OT58)	Carbon steel GE240 UNI EN10293	Carbon steel GE240 UNI EN10293
08	Handwheel	Sheet of carbon steel	Sheet of carbon steel	Sheet of carbon steel	Sheet of carbon steel
09	Gasket	Planiflex KG carbo/C PF81	Planiflex KG carbo/C PF81	Planiflex KG carbo/C PF81	Planiflex KG carbo/C PF81
10	Packing	Carbograph GR8800	Carbograph GR8800	Carbograph GR8800	Carbograph GR8800

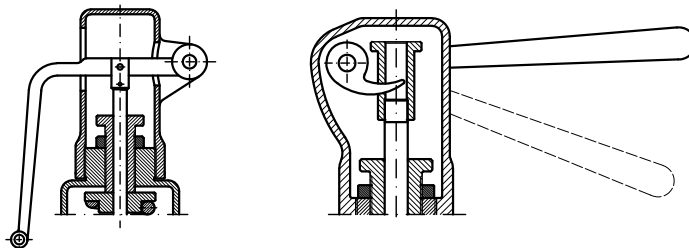
Nota: Combinazioni materiali non standard a richiesta
Note: Non standard materials combinations on request



MOD.207-208-208L



TIPO "H"



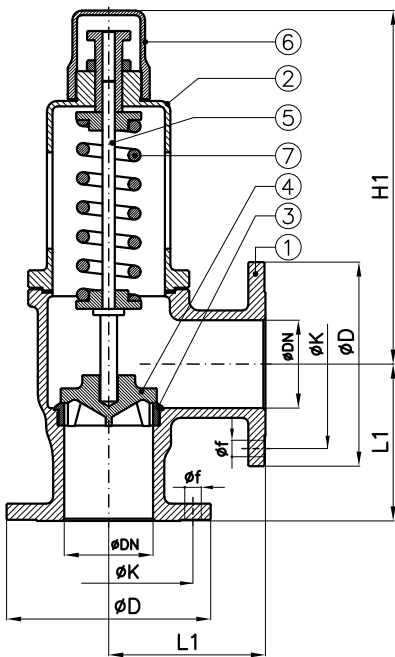
Conform to:
UNI EN1092

Le valvole vengono costruite con cappuccio aperto per vapore, cappuccio chiuso con leva aperta per acqua fredda e tipo "H" a tenuta ermetica per gas, acqua surriscaldata ecc. Si eseguono tenute morbide per particolari tipi di fluidi o gas.

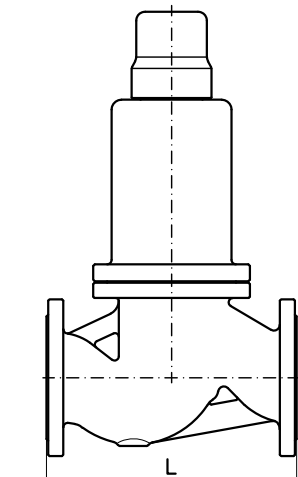
The valves are designed with open cap for steam, closed cap with open lever for cold water and "H" type with hermetic tight for gas, super heated water and soon. Upon request, soft tight for particular type of fluids or gas can be supplied.

DN/DN1	D (PN16)	K (PN16)	f (PN16)	Holes No. f (PN16)	D (PN40)	K (PN40)	f (PN40)	Holes No. f (PN40)	D1 (PN16)	K1 (PN16)	f1 (PN16)	Holes No. f1 (PN16)	D1 (PN40)	K1 (PN40)	f1 (PN40)	Holes No. f1 (PN40)	H1	L1	L2
20/40	105	75	14	4	105	75	14	4	150	110	18	4	150	110	18	4	295	100	90
25/40	115	85	14	4	115	85	14	4	150	110	18	4	150	110	18	4	320	103	106
32/50	140	100	18	4	140	100	18	4	165	125	18	4	165	125	18	4	325	112	116
40/65	150	110	18	4	150	110	18	4	185	145	18	4	185	145	18	8	410	112	125
50/80	165	125	18	4	165	125	18	4	200	160	18	8	200	160	18	8	425	121	132
65/100	185	145	18	4	185	145	18	8	220	180	18	8	235	190	22	8	510	139	155
80/125	200	160	18	8	200	160	18	8	250	210	18	8	270	220	26	8	530	165	180

MOD.150



MOD.150													
DN	PN16-NP16					PN40-NP40					L	L1	L1 (M)
	D	K	f	Holes No. f	H1	D	K	f	Holes No. f	H1			
20	105	75	14	4	242	105	75	14	4	340	150	85	85
25	115	85	14	4	242	115	85	14	4	340	160	90	85
32	140	100	18	4	249	140	100	18	4	360	180	105	90
40	150	110	18	4	254	150	110	18	4	365	200	115	105
50	165	125	18	4	272	165	125	18	4	395	230	125	120
65	185	145	18	4	367	185	145	18	8	530	290	145	150
80	200	160	18	8	400	200	160	18	8	565	310	155	160
100	220	180	18	8	405	235	190	22	8	575	350	175	180
125	250	210	18	8	460	270	220	26	8	620	400	200	200
150	285	240	22	8	475	300	250	26	8	700	480	225	210



Mod. 207 - 208 - 208L - 150				
Combinazione materiali standard - Standard materials Combination				
ITEM	DENOMINAZIONE DENOMINATION	A/316 MATERIALE MATERIALE	G/316 MATERIALE MATERIALE	GS/316 MATERIALE MATERIALE
01	Body	Cast steel GP240-GH UNI EN10213	Cast iron UNI EN1561 EN-GJL-250	Nodular cast iron EN-GJS-400-15U UNI EN1563
02	Bonnet	Steel Fe430B(S275JR) UNI EN10025	Steel Fe430B(S275JR) UNI EN10025	Steel Fe430B(S275JR) UNI EN10025
03	Body seat	Stainless steel AISI316 UNI EN10088	Stainless steel AISI316 UNI EN10088	Stainless steel AISI316 UNI EN10088
04	Disc (≤ DN80)	Stainless steel AISI316 UNI EN10088	Stainless steel AISI316 UNI EN10088	Stainless steel AISI316 UNI EN10088
04	Disc (≥ DN100)	Cast steel GP240-GH UNI EN10213 plus AISI316 facing welding	Cast steel GP240-GH UNI EN10213 plus AISI316 facing welding	Cast steel GP240-GH UNI EN10213 plus AISI316 facing welding
05	Stem	Stainless steel AISI316 UNI EN10088	Stainless steel AISI316 UNI EN10088	Stainless steel AISI316 UNI EN10088
06	Upper Bonnet	Steel Fe430B(S275JR) UNI EN10025	Steel Fe430B(S275JR) UNI EN10025	Steel Fe430B(S275JR) UNI EN10025
07	Spring	Steel UNI EN10270	Steel UNI EN10270	Steel UNI EN10270

Nota: Combinazioni materiali non standard a richiesta
Note: Non standard materials combinations on request