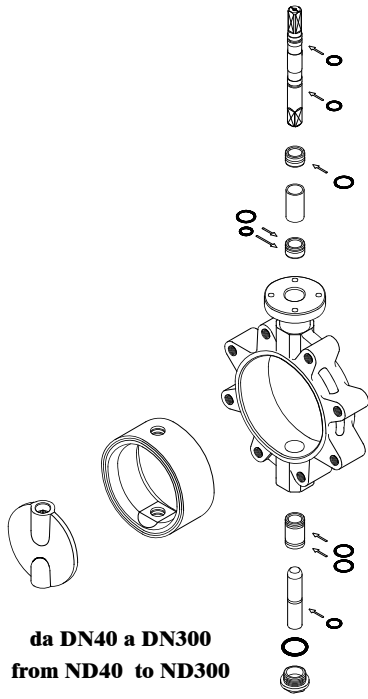




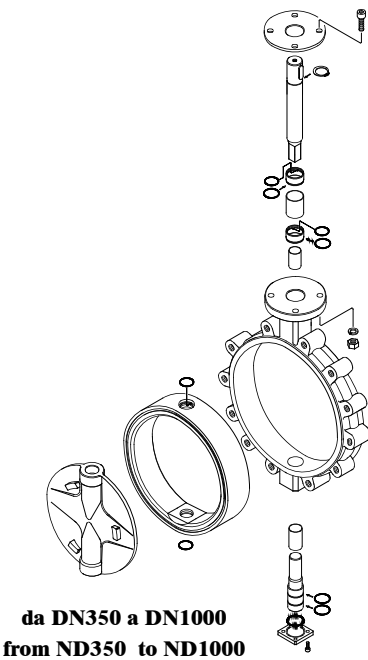
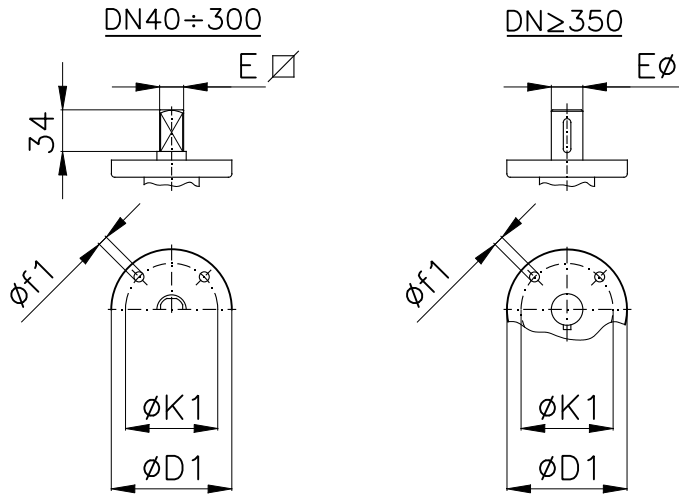
**Valvole a farfalla tipo Lug PN6 - PN10DIN - PN16 - ANSI150**  
**Butterfly valves Lug type NP6 - NP10DIN - NP16 - ANSI150**

**Tab.203.2**

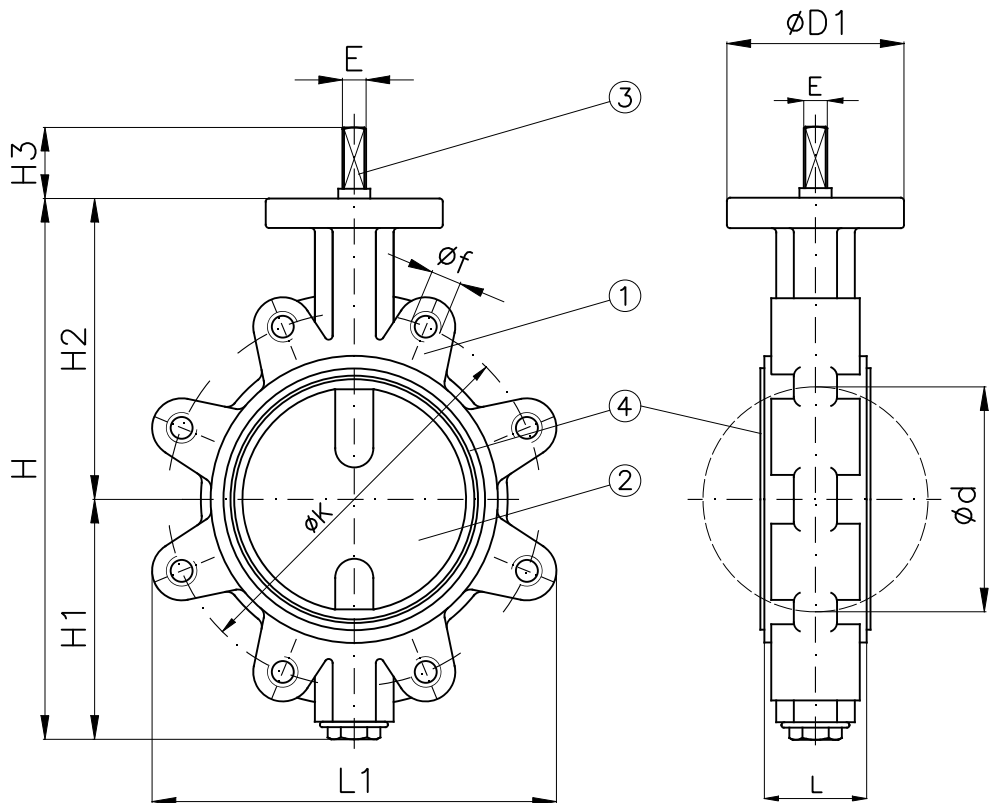
**Conform to:**  
**API STD 609**  
**MSS SP 67**  
**ANSI B16.5**  
**ANSI B16.34**  
**DIN3202**  
**ISO 5752**  
**UNI EN 1092**



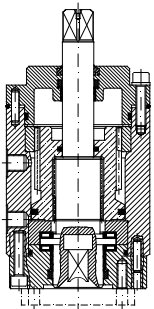
da DN40 a DN300  
from ND40 to ND300



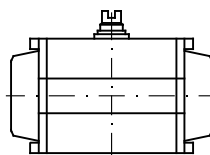
da DN350 a DN1000  
from ND350 to ND1000



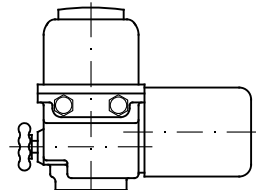
Attuatore idraulico  
Hydraulic actuator



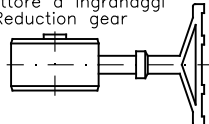
Attuatore pneumatico  
Pneumatic actuator



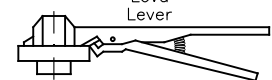
Attuatore elettrico  
Electrical actuator



Riduttore a ingranaggi  
Reduction gear



Leva  
Lever





**Valvole a farfalla tipo Lug PN6 - PN10DIN - PN16 - ANSI150**  
**Butterfly valves Lug type NP6 - NP10DIN - NP16 - ANSI150**

**Tab.203.2**

Pos.	Descrizione Description	Materiali	Materials
1	Corpo Body	Acciaio FeG45VR Acciaio inox CF8M Bronzo Alluminio Ghisa Sferoidale GGG40	Cast Steel FeG45VR Stainless Steel CF8M Aluminium Bronze Nodular Cast Iron GGG40
2	Disco Disc	Acciaio FeG45VR Acciaio inox CF8M Bronzo Alluminio Ghisa Sferoidale GGG40	Cast Steel FeG45VR Stainless Steel CF8M Aluminium Bronze Nodular Cast Iron GGG40
3	Stelo Stem	Acciaio inox AISI 316 Acciaio inox AISI 416	Stainless Steel AISI 316 Stainless Steel AISI 416
4	Sede di tenuta Disc seat ring	Buna N EPDM Viton	Silicone Hypalon PTFE

campo di applicazione e caratteristiche delle sedi di tenuta in elastomero  
 application and characteristics for elastomer seats

DENOMINAZIONE COMMERCIALE COMMERCIAL NAME	DENOMINAZIONE TECNICA TECHNICAL NAME	CAMPO DI APPLICAZIONE GENERAL APPLICATION	LIMITI TEMPERATURA TEMPERATURE LIMITS	NON USARE PER: NOT RECOMMENDED FOR:
BUNA N ( NBR )	Copolimero di butadiene e acrilonitrile ad alto tenore Copolymer of butadiene and high acrylonitrile	Idrocarburi con meno del 40% di aromatici, gas naturale, aria, H <sub>2</sub> O, H <sub>2</sub> O mare, salamoia, alcoli, glicoli. Hydrocarbons with less than 40% of aromatics, natural gas, air, H <sub>2</sub> O, sea water, brine, alcohols, glycols.	-20°C -4°F +100°C +212°F	- SOLVENTI / SOLVENTS - BENZENE / BENZENE - XILOLO / XYLENE
ETILENE PROPILENE ETHYLENE PROPYLENE ( EPDM )	Termopolimero di etilene e propilene Termpolymer of ethylene and propylene	H <sub>2</sub> O, vapore, H <sub>2</sub> O mare, salamoia, sostanze abrasive, fosfati, esteri, chetoni, alcali composti alimentari, liquidi e solidi, acidi inorganici a bassa concentrazione, soda caustica. H <sub>2</sub> O, steam, air, brine, abrasives, phosphates, esters, ketones, alkali, food compounds, liquids and solids, dilute inorganic acids, caustic soda.	-35°C -31°F +120°C +248°F	- IDROCARBURI / HYDROCARBONS - OLII / OILS - GRASSI / FATS - ARIA SECCA / DRY AIR
ETILENE PROPILENE ALTA TEMP. ETHYLENE PROPYLENE HIGH TEMP. ( EPDM H.T. )	Termopolimero di etilene e propilene Termpolymer of ethylene and propylene	H <sub>2</sub> O, vapore, H <sub>2</sub> O mare, salamoia, sostanze abrasive, fosfati, esteri, chetoni, alcali composti alimentari, liquidi e solidi, acidi inorganici a bassa concentrazione, soda caustica. H <sub>2</sub> O, steam, air, brine, abrasives, phosphates, esters, ketones, alkali, food compounds, liquids and solids, dilute inorganic acids, caustic soda.	-35°C -31°F +150°C +302°F	- IDROCARBURI / HYDROCARBONS - OLII / OILS - GRASSI / FATS - ARIA SECCA / DRY AIR
HYPALON ( CSM )	Clorosulfonato di polietilene Chlorosulphonated polyethylene	Acidi ossidanti, acido cromico, acido fluoridrico, acidi a base di zolfo, ipocloriti di sodio, ozono. Oxidizing acids, chromic acid, hydrofluoric acid, sulphur based acids, sodium hypochlorite, ozone.	-18°C 0°F +100°C +212°F	- VAPORE / STEAM - CHETONI / KETONES - ARIA CALDA / HOT AIR - ACIDO NITRICO / NITRIC ACID
SILICONE ( Q )	Metil vinile silconica Methylvinyl silicone	Bevande - Alimentari Beverages - Foodstuffs	-30°C -22°F +150°C +302°F	- IDROCARBURI / HYDROCARBONS - SOLVENTI / SOLVENTS - VAPORE / STEAM
VITON ( FPM )	Copolimero esafluoropropilene vinilidene fluoruro Copolymer of esafluoro propylene fluoro vinylidene	Idrocarburi ad alta concentrazione di aromatici, acidi minerali e alogenati, acido fosforico, eteri aromatici ed alifatici. Hydrocarbons with high concentration of aromatics, mineral and halogenated acids, phosphoric acid, aliphatic and aromatic ethers.	-10°C -14°F +160°C +320°F	- VAPORE / STEAM - CHETONI / KETONES - AMMINE / AMINES - ESTERI / ESTERS - ALCALI / ALKALI
NEOPRENE ( CR )	Policloroprene Polichloroprene	Olivi, acidi minerali diluiti, alcali, grassi. Oils, dilute mineral acids, alkali, fats.	-18°C 0°F +90°C +194°F	- CHETONI / KETONES - ACIDI CONCENTRATI/CONCENTRATED ACIDS - VAPORE / STEAM
GOMMA NATURALE NATURAL RUBBER ( NR )	Lattice (vegetale) Latex (vegetable)	Prodotti abrasivi Abrasive products	-35°C -31°F +65°C +149°F	- SOLVENTI PER VERNICI/SOLVENTS FOR PAINT - IDROCARBURI / HYDROCARBONS - OLII / OILS
TEFLON ( P.T.F.E. )	Politetrafluoro etilene Polytetrafluoro ethylene	Prodotti corrosivi - Solventi Corrosive products - Solvents	-40°C -40°F +180°C +356°F	- PRODOTTI ABRASIVI/ABRASIVE PRODUCTS - FLUORO ALLO STATO GASSOSO/FLUORINE GASEOUS - METALLI ALCALINI ALLO STATO FUSO/ALKALINE METALS

														ATTACCO ISO 5211				PN6			PN10			PN16			ANSI150		
DN	d	E∅	E∅	H	H1	H2	H3	L	L1	Weight (Kg)	D1	K1	f1	Holes NO. f1	K	f	Holes NO. f	K	f	Holes NO. f	K	f	Holes NO. f	K	f	Holes NO. f			
40	1 1/2	45.9	12	-	188	90	98	41	33	111	2.6	90	70	8.5	4	100	M12	4	110	M16	4	110	M16	4	98.5	M14	4		
50	2	56.6	12	-	205	96	109	41	43	120	3.5	90	70	8.5	4	110	M12	4	125	M16	4	125	M16	4	120.5	M18	4		
65	2 1/2	70.5	12	-	230	108	122	41	46	138	4.9	90	70	8.5	4	130	M12	4	145	M16	4	145	M16	4	139.5	M18	4		
80	3	83.3	12	-	250	118	132	41	46	150	5.4	90	70	8.5	4	150	M16	4	160	M16	8	160	M16	8	152.4	M18	4		
100	4	105	12	-	285	132	153	41	52	213	7	90	70	8.5	4	170	M16	4	180	M16	8	180	M16	8	190.5	M18	8		
125	5	127.7	16	-	327	150	177	41	56	243	10	90	70	8.5	4	200	M16	8	210	M16	8	210	M16	8	216.0	M20	8		
150	6	152.2	16	-	359	165	194	41	56	267	11.1	90	70	8.5	4	225	M16	8	240	M20	8	240	M20	8	241.5	M20	8		
200	8	197.6	16	-	419	194	225	41	60	320	17	90	70	8.5	4	280	M16	8	295	M20	8	295	M20	12	298.5	M20	8		
250	10	245.9	18	-	495	220	275	41	68	402	27.4	125	102	11	4	335	M16	12	350	M20	12	355	M24	12	362.0	M22	12		
300	12	298.2	24	-	559	262	297	41	78	473	40.4	125	102	11	4	395	M20	12	400	M20	12	410	M24	12	432.0	M22	12		
350	14	332	-	44.5	632	281	351	60	78	516	60	175	140	17	4	445	M20	12	460	M20	16	470	M24	16	476.0	M27	12		
400	16	380	-	44.5	681	305.5	375.5	60	102	590	90	175	140	17	4	495	M20	16	515	M24	16	525	M27	16	540.0	M27	16		
450	18	432	-	44.5	749	349	400	60	114	644	110	175	140	17	4	550	M20	16	565	M24	20	585	M27	20	578.0	M30	16		
500	20	483	-	44.5	798	373	425	60	127	715	150	175	140	17	4	600	M20	20	620	M24	20	650	M30	20	635.0	M30	20		
600	24	591.5	-	63	936	445	491	90	153	830	270	210	165	22	4	F16	705	M24	20	725	M27	20	770	M33	20	749.5	M33	20	
700	28	680	-	75	1120	540	580	90	165	910	370	300	254	17	8	F25	810	M24	24	840	M27	24	840	M33	24	863.6	M33	28	
800	32	790	-	75	1242	612	630	90	190	1040	480	360	254	17	8	F25	920	M27	24	950	M30	24	950	M36	24	977.9	M39	28	
1000	40	975	-	95	1500	740	760	120	216	1260	680	415	298	22	8	F30	1120	M27	28	1160	M33	28	1170	M39	28	1200.2	M39	36	