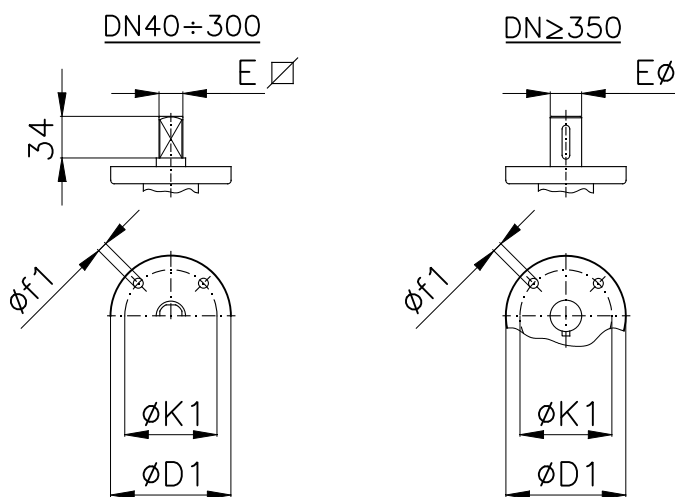




Valvole a farfalla tipo Wafer PN6 - PN10DIN - PN16 - ANSI150
Butterfly valves Wafer type NP6 - NP10DIN - NP16 - ANSI150

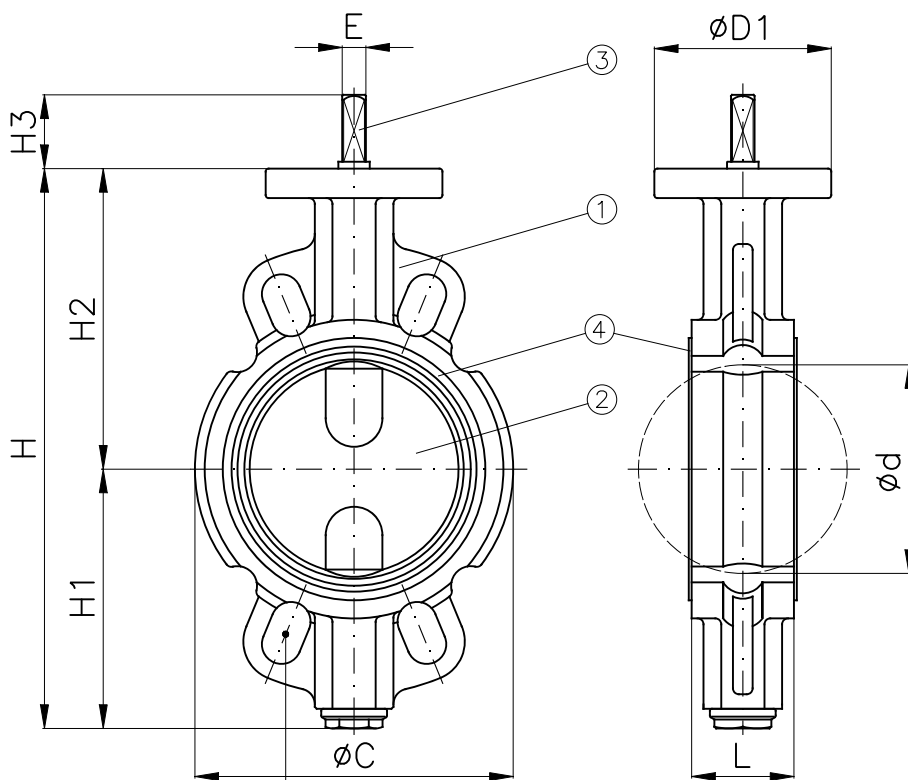
Tab.203.1

Conform to:
API STD 609
MSS SP 67
ANSI B16.5
ANSI B16.34
DIN3202
ISO 5752
UNI EN 1092



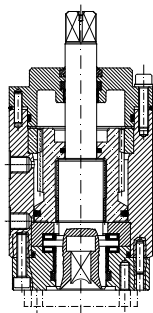
da DN40 a DN300
from ND40 to ND300

da DN350 a DN1000
from ND350 to ND1000

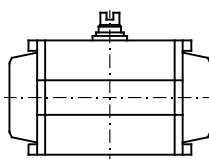


per installazione flange PN6-10DIN-16-ANSI150
 for installation NP6-10DIN-16-ANSI150 flanges

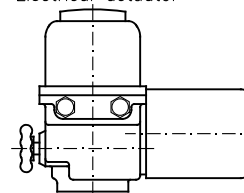
Attuatore idraulico
 Hydraulic actuator



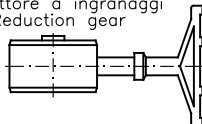
Attuatore pneumatico
 Pneumatic actuator



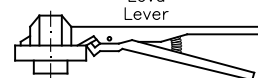
Attuatore elettrico
 Electrical actuator



Riduttore a ingranaggi
 Reduction gear



Leva
 Lever





Pos.	Descrizione Description	Materiali	Materials
1	Corpo Body	Acciaio FeG45VR Acciaio inox CF8M Bronzo Alluminio Ghisa Sferoidale GGG40 Alluminio	Cast Steel FeG45VR Stainless Steel CF8M Aluminium Bronze Nodular Cast Iron GGG40 Aluminium
2	Disco Disc	Acciaio FeG45VR Acciaio inox CF8M Bronzo Alluminio Ghisa Sferoidale GGG40	Cast Steel FeG45VR Stainless Steel CF8M Aluminium Bronze Nodular Cast Iron GGG40
3	Stelo Stem	Acciaio inox AISI 316 Acciaio inox AISI 416	Stainless Steel AISI 316 Stainless Steel AISI 416
4	Sede di tenuta Disc seat ring	Buna N EPDM Viton	Silicone Hypalon PTFE

campo di applicazione e caratteristiche delle sedi di tenuta in elastomero
application and characteristics for elastomer seats

DENOMINAZIONE COMMERCIALE COMMERCIAL NAME	DENOMINAZIONE TECNICA TECHNICAL NAME	CAMPO DI APPLICAZIONE GENERAL APPLICATION	LIMITI TEMPERATURA TEMPERATURE LIMITS	NON USARE PER: NOT RECOMMENDED FOR:
BUNA N (NBR)	Copolimero di butadiene e acrilonitrile ad alto tenore Copolymer of butadiene and high acrylonitrile	Idrocarburi con meno del 40% di aromatici, gas naturale, aria, H ₂ O, H ₂ O mare, salamoia, alcoli, glicoli. Hydrocarbons with less than 40% of aromatics, natural gas, air, H ₂ O, sea water, brine, alcohols, glycols.	-20°C -4°F +100°C +212°F	- SOLVENTI / SOLVENTS - BENZENE / BENZENE - XILOLO / XYLENE
ETILENE PROPILENE ETHYLENE PROPYLENE (EPDM)	Termopolimero di etilene e propilene Termpolymer of ethylene and propylene	H ₂ O, vapore, H ₂ O mare, salamoia, sostanze abrasive, fosfati, esteri, chetoni, alcali composti alimentari, liquidi e solidi, acidi inorganici a bassa concentrazione, soda caustica. H ₂ O, steam, air, brine, abrasives, phosphates, esters, ketones, alkali, food compounds, liquids and solids, dilute inorganic acids, caustic soda.	-35°C -31°F +120°C +248°F	- IDROCARBURI / HYDROCARBONS - OLII / OILS - GRASSI / FATS - ARIA SECCA / DRY AIR
ETILENE PROPILENE ALTA TEMP. ETHYLENE PROPYLENE HIGH TEMP. (EPDM H.T.)	Termopolimero di etilene e propilene Termpolymer of ethylene and propylene	H ₂ O, vapore, H ₂ O mare, salamoia, sostanze abrasive, fosfati, esteri, chetoni, alcali composti alimentari, liquidi e solidi, acidi inorganici a bassa concentrazione, soda caustica. H ₂ O, steam, air, brine, abrasives, phosphates, esters, ketones, alkali, food compounds, liquids and solids, dilute inorganic acids, caustic soda.	-35°C -31°F +150°C +302°F	- IDROCARBURI / HYDROCARBONS - OLII / OILS - GRASSI / FATS - ARIA SECCA / DRY AIR
HYPALON (CSM)	Clorosulfonato di polietilene Chlorosulphonated polyethylene	Acidi ossidanti, acido cromatico, acido fluoridrico, acidi a base di zolfo, ipocloriti di sodio, ozono. Oxidizing acids, chromic acid, hydrofluoric acid, sulphur based acids, sodium hypochlorite, ozone.	-18°C 0°F +100°C +212°F	- VAPORE / STEAM - CHETONI / KETONES - ARIA CALDA / HOT AIR - ACIDO NITRICO / NITRIC ACID
SILICONE (Q)	Metil vinile silconica Methylvinyl silicone	Bevande - Alimentari Beverages - Foodstuffs	-30°C -22°F +150°C +302°F	- IDROCARBURI / HYDROCARBONS - SOLVENTI / SOLVENTS - VAPORE / STEAM
VITON (FPM)	Copolimero esafluoropropilene vinilidene fluoruro Copolymer of esafluoro propylene fluoro vinylidene	Idrocarburi ad alta concentrazione di aromaticita', acidi minerali e alogenati, acido fosforico, eteri aromatici ed alifatici. Hydrocarbons with high concentration of aromatics, mineral and halogenated acids, phosphoric acid, aliphatic and aromatic ethers.	-10°C -14°F +160°C +320°F	- VAPORE / STEAM - CHETONI / KETONES - AMMINE / AMINES - ESTERI / ESTERS - ALCALI / ALKALI
NEOPRENE (CR)	Polichloroprene Polichloroprene	OlII, acidi minerali diluiti, alcali, grassi. Oils, dilute mineral acids, alkali, fats.	-18°C 0°F +90°C +194°F	- CHETONI / KETONES - ACIDI CONCENTRATI/CONCENTRATED ACIDS - VAPORE / STEAM
GOMMA NATURALE NATURAL RUBBER (NR)	Lattice (vegetale) Latex (vegetable)	Prodotti abrasivi Abrasive products	-35°C -31°F +65°C +149°F	- SOLVENTI PER VERNICI/SOLVENTS FOR PAINT - IDROCARBURI / HYDROCARBONS - OLII / OILS
TEFLON (P.T.F.E.)	Politetrafluoro etilene Polytetrafluoro ethylene	Prodotti corrosivi - Solventi Corrosive products - Solvents	-40°C -40°F +180°C +356°F	- PRODOTTI ABRASIVI/ABRASIVE PRODUCTS - FLUORO ALLO STATO GASSOSO/FLUORINE GASEOUS - METALLI ALCALINI ALLO STATO FUSO/ALKALINE METALS

ATTACCO ISO 5211

DN	C	d	E ∅	E ∅	H	H1	H2	H3	L	Weight (Kg)	D1	K1	f1	Holes NO. f1		
40	1 1/2"	90	45.9	12	-	188	90	98	41	33	2.2	90	70	8.5	4	F07
50	2"	103	56.6	12	-	205	96	109	41	43	2.9	90	70	8.5	4	
65	2 1/2"	122	70.5	12	-	230	108	122	41	46	3.9	90	70	8.5	4	
80	3"	140	83.3	12	-	250	118	132	41	46	4.2	90	70	8.5	4	
100	4"	162	105	12	-	285	132	153	41	52	5	90	70	8.5	4	
125	5"	200	127.7	16	-	327	150	177	41	56	7.4	90	70	8.5	4	
150	6"	220	152.2	16	-	359	165	194	41	56	8.5	90	70	8.5	4	
200	8"	270	197.6	16	-	419	194	225	41	60	11.8	90	70	8.5	4	
250	10"	328	245.9	18	-	495	220	275	41	68	18.5	125	102	11	4	F10
300	12"	392	298.2	24	-	559	262	297	41	78	29.8	125	102	11	4	
350	14"	436	332	-	44.5	632	281	351	60	78	50	175	140	17	4	F14
400	16"	483	380	-	44.5	681	305.5	375.5	60	102	70	175	140	17	4	
450	18"	540	432	-	44.5	749	349	400	60	114	90	175	140	17	4	
500	20"	580	483	-	44.5	798	373	425	60	127	110	175	140	17	4	
600	24"	710	591.5	-	63	936	445	491	90	153	210	210	165	22	4	F16
700	28"	792	680	-	75	1120	540	580	90	165	250	300	254	17	8	F25
800	32"	925	790	-	75	1242	612	630	90	190	355	360	254	17	8	F25
1000	40"	1135	975	-	95	1500	740	760	120	216	575	415	298	22	8	F30