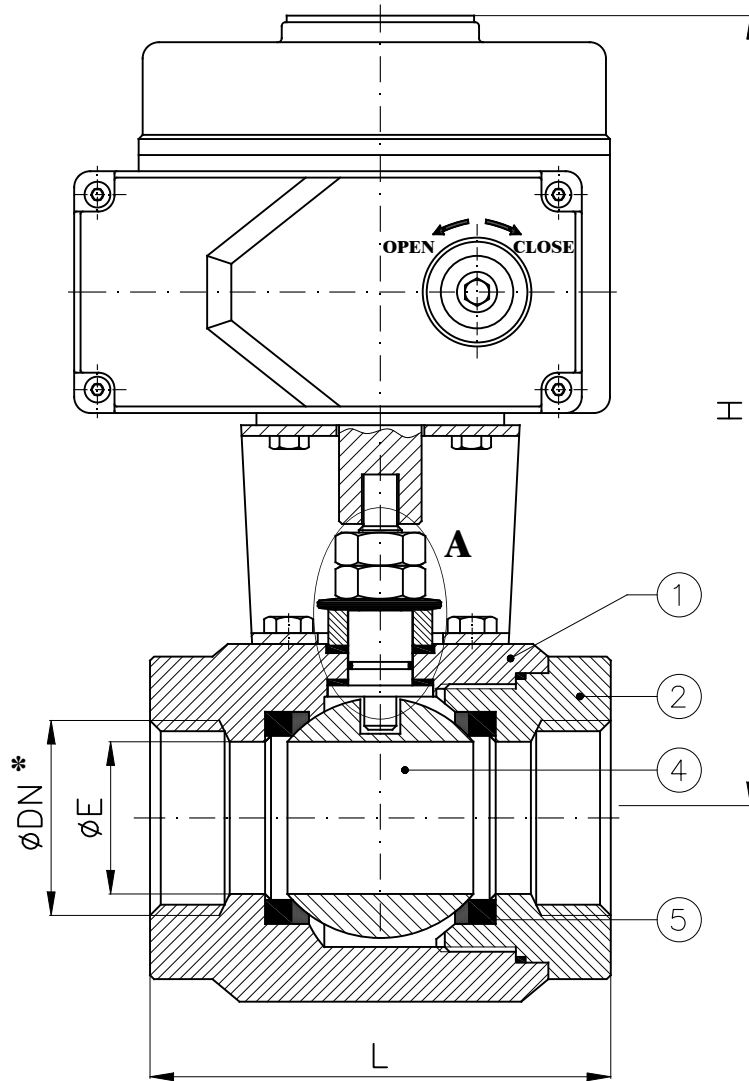




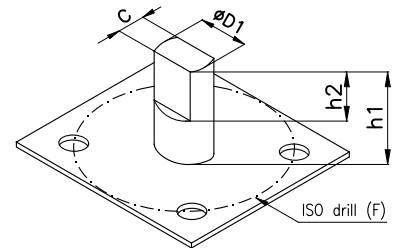
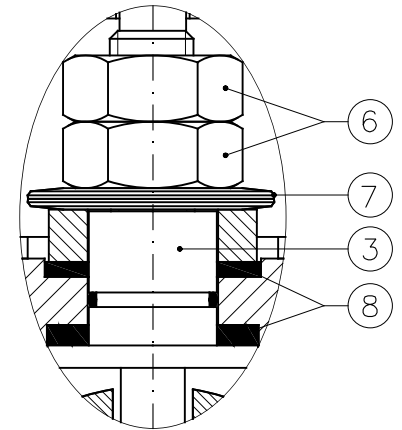
Valvole a sfera filettate tipo monoblocco con motore elettrico
End entry (monobloc) threaded ball valves with electric motor

Tab.202
ME/AOX

Conform to:
ANSI B16.34
BS 5351 / ISO17292



DETAIL - DETTAGLIO "A"



*: Filettatura GAS
 *: BSPP threaded

DN	Electric motor	E	H (-)	L	L2	L3	L4	L5	Weight (Kg)	
15	1/2"	AOX-003	14	200	75	123	113	100	25	3.5
20	3/4"	AOX-003	19	205	90	123	113	100	25	4.3
25	1"	AOX-005	25	220	100	160	121	121	25	7
32	1 1/4"	AOX-005	32	225	115	160	121	121	25	8.5
40	1 1/2"	AOX-008	38	230	128	160	121	121	25	9
50	2"	AOX-008	48	235	147	160	121	121	25	10.5

DN	D1xC	h1	h2	ISO-F	
15	1 1/2"	10x5.5	23	10	F03
20	3/4"	12x7.5	29	11	F04
25	1"	12x7.5	28	12	F04
32	1 1/4"	14x9	45	18	F05
40	1 1/2"	14x9	44	19	F05
50	2"	14x9	46	17	F05

ELECTRIC MOTOR

La scelta del motore dipende dalla pressione di esercizio dell'impianto
 The choice of the motor depends from plant working pressure

Combinazione materiali standard - Standard materials Combination			
ITEM	DENOMINAZIONE DENOMINATION	A/316 MATERIALE MATERIAL	316/316 MATERIALE MATERIAL
01	Body	Forged steel ASTM A105N	Stainless steel AISI316 UNI EN10088
02	Lateral	Forged steel ASTM A105N	Stainless steel AISI316 UNI EN10088
03	Stem	Stainless steel AISI316 UNI EN10088	Stainless steel AISI316 UNI EN10088
04	Ball	Stainless steel AISI316/304 UNI EN10088	Stainless steel AISI316 UNI EN10088
05	Seat	PTFE/RPTFE	PTFE/RPTFE
06	Nuts	Galvanized Steel 8.8 EN20898-1	Galvanized Steel 8.8 EN20898-1
07	Socket springs	Galvanized Steel	Galvanized Steel
08	Stem seals	RPTFE	RPTFE

Nota: Combinazioni materiali non standard a richiesta
 Note: Non standard materials combinations on request