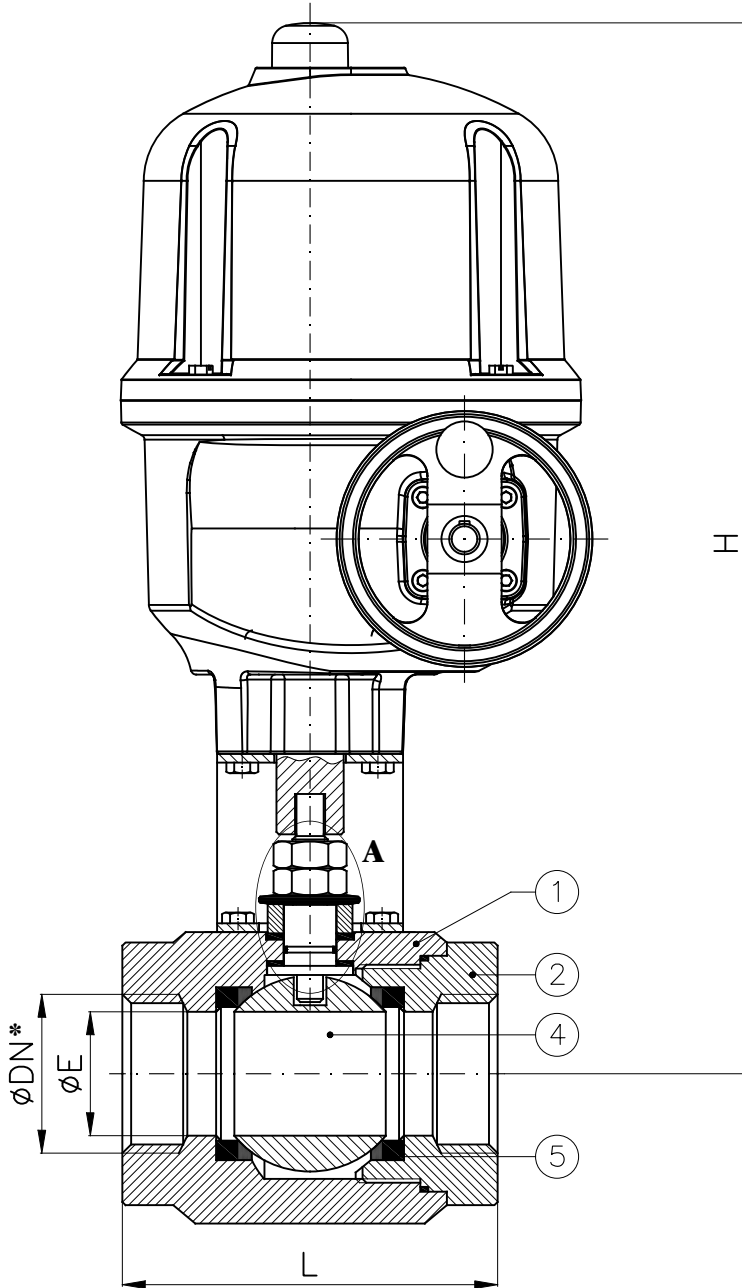
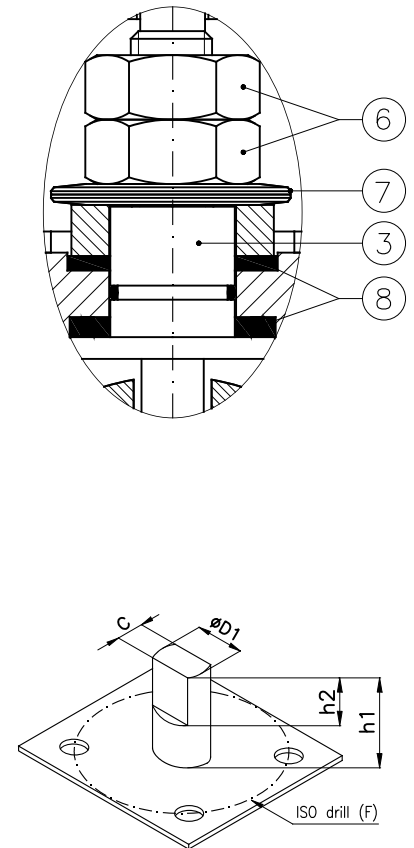




Conform to:
ANSI B16.34
BS 5351 / ISO17292



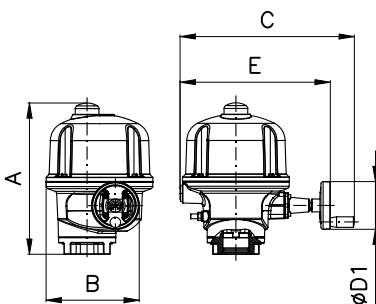
DETAIL - DETTAGLIO "A"



*: Filettatura GAS
 *: BSPP threaded

DN	Electric Motor	E	H (~)	L	Weight (Kg)
15	1/2" AQ5	14	375	75	12
20	3/4" AQ5	19	380	90	13
25	1" AQ5	25	385	100	14
32	1 1/4" AQ10	32	390	115	15
40	1 1/2" AQ10	38	395	128	16
50	2" AQ10	48	400	147	18

DN	D1xC	h1	h2	ISO-F
15	1/2" 10x5.5	23	10	F03
20	3/4" 12x7.5	29	11	F04
25	1" 12x7.5	28	12	F04
32	1 1/4" 14x9	45	18	F05
40	1 1/2" 14x9	44	19	F05
50	2" 14x9	46	17	F05



	A	B	C	E	$\phi D1$
AQ5/10	286	184	276	225	100

Combinazione materiali standard - Standard materials Combination			
ITEM	DENOMINAZIONE DENOMINATION	A/316 MATERIALE MATERIAL	316/316 MATERIALE MATERIAL
01	Body	Forged steel ASTM A105N	Stainless steel AISI316 UNI EN10088
02	Lateral	Forged steel ASTM A105N	Stainless steel AISI316 UNI EN10088
03	Stem	Stainless steel AISI316 UNI EN10088	Stainless steel AISI316 UNI EN10088
04	Ball	Stainless steel AISI316/304 UNI EN10088	Stainless steel AISI316 UNI EN10088
05	Seat	PTFE/RPTFE	PTFE/RPTFE
06	Nuts	Galvanized Steel 8.8 EN20898-1	Galvanized Steel 8.8 EN20898-1
07	Socket springs	Galvanized Steel	Galvanized Steel
08	Stem seals	RPTFE	RPTFE

Nota: Combinazioni materiali non standard a richiesta
 Note: Non standard materials combinations on request