

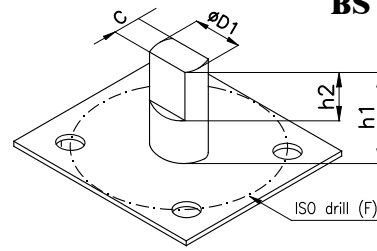
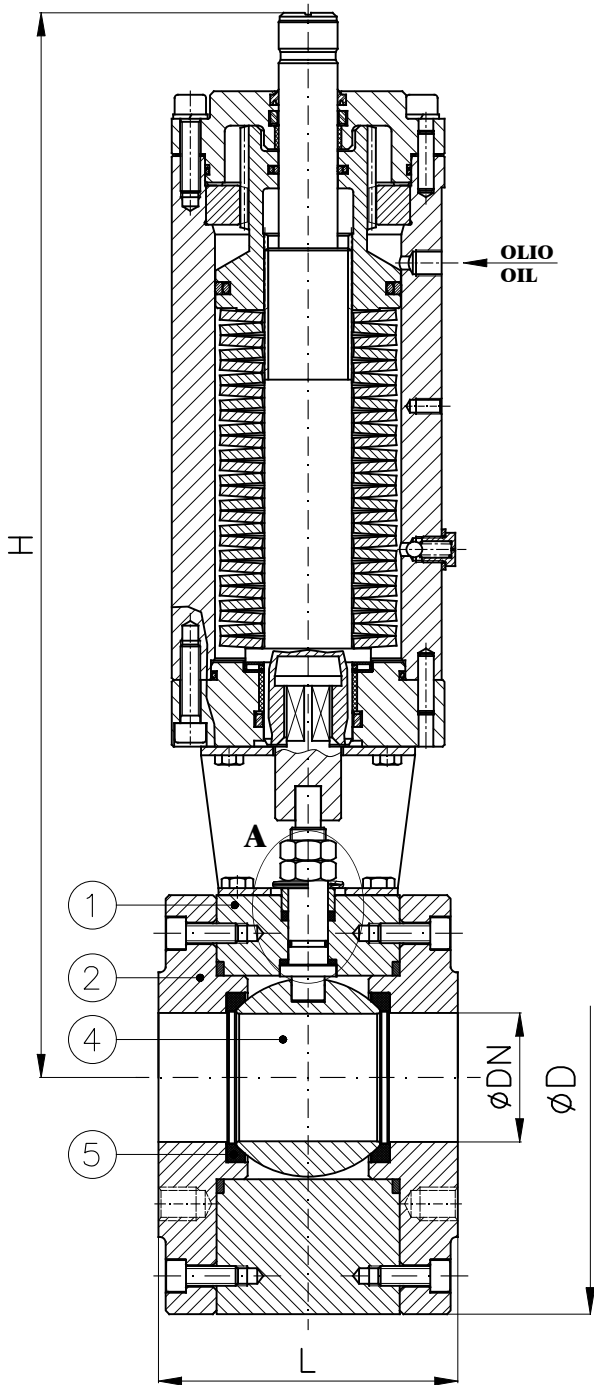


Valvole a sfera tipo wafer flangiata PN6-10DIN-16-ANSI150-ANSI300 con attuatore idraulico semplice effetto

Ball valves wafer type NP6-10DIN-16-ANSI150-ANSI300 with hydraulic single acting actuator

**Tab.201
Hydr/SR**

**Conform to:
BS 5351 / ISO17292**



DN	D1xC	h1 (PN6)	h1 (PN16)	h2	ISO-F	
15	1 1/2"	10x5.5	19	19	7	4xM5 ø35
20	3/4"	12x7.5	25	21	10	F04
25	1"	12x7.5	25	21	10	F04
32	1 1/4"	14x9	34	33	10	F05
40	1 1/2"	14x9	33	33	10	F05
50	2"	14x9	33	33	10	F05
65	2 1/2"	22x14	62	55	13	F07
80	3"	22x14	51	50	13	F07
100	4"	30x18	65	61	13	F07
125	5"	30x18	64	64	24	F10
150	6"	30x18	64	64	20	F10

Attuatore rotante a singolo effetto con ritorno a molla

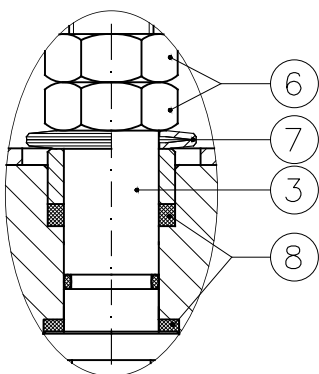
Le taglie degli attuatori devono essere verificate in funzione della pressione di esercizio della valvola e della pressione dell'olio del circuito idraulico.

Single acting rotary actuator (spring return)

The size of the actuator must be checked on the strength of the working pressure of the valve and on the strength of the oil pressure inside the hydraulic circuit.

DN	ATTUATORE ACTUATOR	D PN6	D PN16	D ANSI150	D ANSI300	H (~)	L	Weight (Kg)	
15	1 1/2"	RS.05	69	88	79	88	360	35	14.5
20	3/4"	RS.05	79	98	89	108	365	42	15
25	1"	RS.05	88	108	99	118	370	46	16
32	1 1/4"	H.927 (RS.10)	108	128	110	128	420	55	17
40	1 1/2"	H.927 (RS.10)	118	138	120	138	440	66	19.5
50	2"	H.927 (RS.10)	128	148	153	158	445	72	21
65	2 1/2"	H.929 (RS.13)	148	168	168	178	515	98	28
80	3"	H.929 (RS.13)	178	188	190	198	525	120	36
100	4"	RS.21	200	220	220	230	625	140	50
125	5"	H.941 (RS.26)	230	250	250	260	675	177	72
150	6"	H.941 (RS.26)	280	280	280	300	690	210	95

DETAIL - DETTAGLIO "A"



Combinazione materiali standard - Standard materials Combination					
ITEM	DENOMINAZIONE DENOMINATION	A/316 MATERIALE MATERIAL	316/316 MATERIALE MATERIAL	B/316 MATERIALE MATERIAL	B/B (Max ND4") MATERIALE MATERIAL
01	Body	Forged steel ASTM A105N	Stainless steel AISI316 UNI EN10088	Bronze UNI EN1982 G-CuSn5Zn5Pb5	Bronze UNI EN1982 G-CuSn5Zn5Pb5
02	Lateral	Forged steel ASTM A105N	Stainless steel AISI316 UNI EN10088	Bronze UNI EN1982 G-CuSn5Zn5Pb5	Bronze UNI EN1982 G-CuSn5Zn5Pb5
03	Stem	Stainless steel AISI316 UNI EN10088	Stainless steel AISI316 UNI EN10088	Stainless steel AISI316 UNI EN10088	Aluminum Bronze (ND<2") Bronze UNI EN1982 (ND2"1/2 to 4")
04	Ball	Stainless steel AISI316/304 UNI EN10088	Stainless steel AISI316 UNI EN10088	Stainless steel AISI316 UNI EN10088	Bronze UNI EN1982 G-CuSn5Zn5Pb5
05	Seat	PTFE/RPTFE	PTFE/RPTFE	PTFE/RPTFE	PTFE/RPTFE
06	Nuts	Galvanized Steel 8.8 EN20898-1	Galvanized Steel 8.8 EN20898-1	Galvanized Steel 8.8 EN20898-1	Galvanized Steel 8.8 EN20898-1
07	Socket springs	Galvanized Steel	Galvanized Steel	Galvanized Steel	Galvanized Steel
08	Stem seals	RPTFE	RPTFE	RPTFE	RPTFE

Nota: Combinazioni materiali non standard a richiesta
Note: Non standard materials combinations on request