

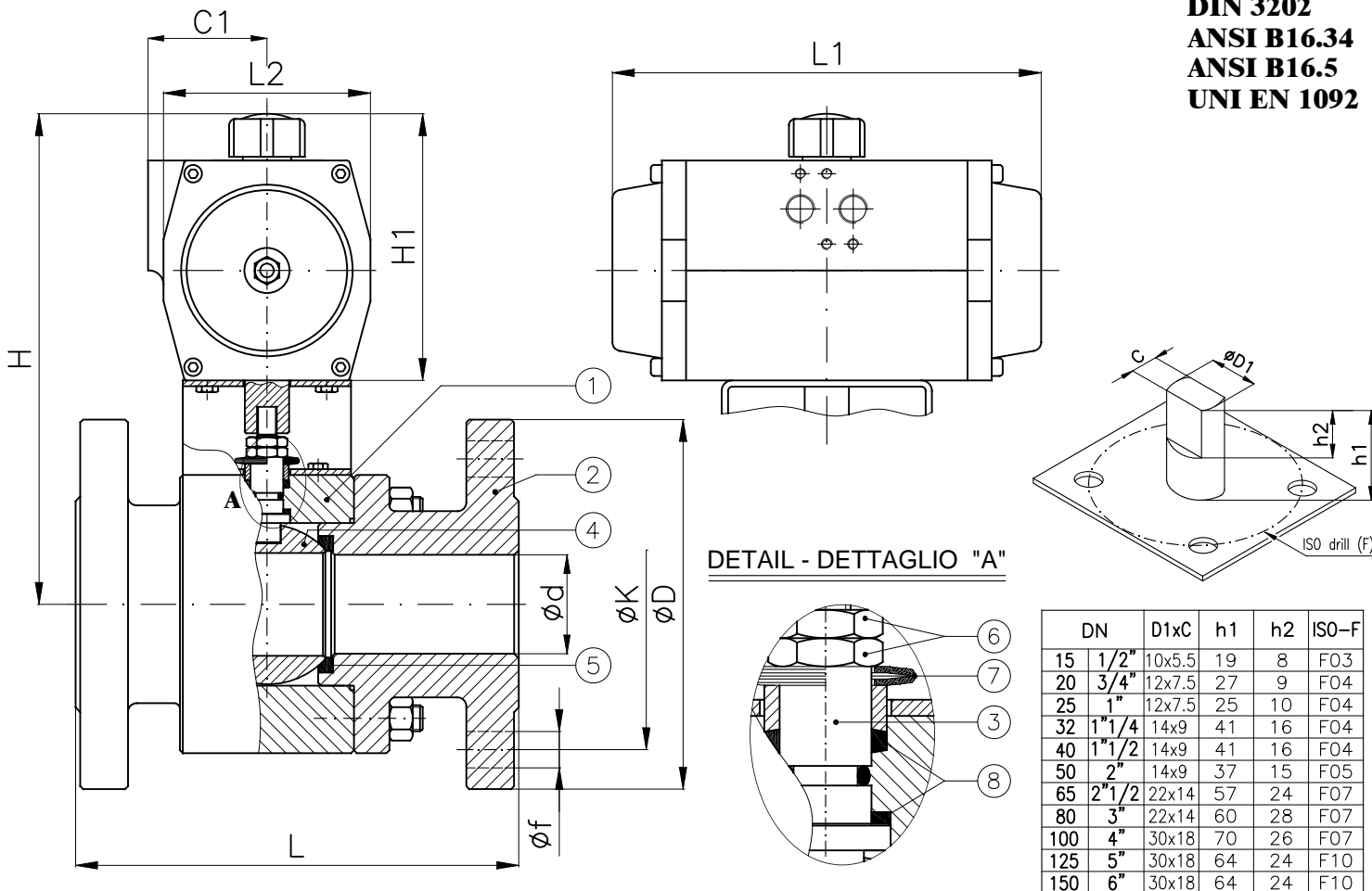


Valvole a sfera SPLIT BODY PN6-16-40-ANSI150 con attuatore pneumatico
Ball valves SPLIT BODY NP6-16-40-ANSI150 with pneumatic actuator

Tab.200PN

Tab 200PN-A: ANSI150
 Tab 200PN-B: PN6-16-40

Conform to:
DIN 3202
ANSI B16.34
ANSI B16.5
UNI EN 1092



DN	D1xC	h1	h2	ISO-F	
15	1/2"	10x5.5	19	8	F03
20	3/4"	12x7.5	27	9	F04
25	1"	12x7.5	25	10	F04
32	1 1/4"	14x9	41	16	F04
40	1 1/2"	14x9	41	16	F04
50	2"	14x9	37	15	F05
65	2 1/2"	22x14	57	24	F07
80	3"	22x14	60	28	F07
100	4"	30x18	70	26	F07
125	5"	30x18	64	24	F10
150	6"	30x18	64	24	F10

DA: DOUBLE ACTING SR: SIMPLE ACTING (spring return)		Tab. 200PN-B	Tab. 200PN-A	PN6 - NP6				PN16 - NP16				PN40 - NP40				ANSI150				Weight (Kg)								
DN	Pneumatic Actuator	C1	d	H (-)	H1	L PN6-16-40	L ANSI150	L1	L2	D	K	f	Holes NO. f	D	K	f	Holes NO. f	D	K		f	Holes NO. f	D	K	f	Holes NO. f		
15	1/2"	AP1 DA AP1 SR	41	14	185	92	115	108	142	60	80	55	11	4	95	65	14	4	95	65	14	4	88.9	60	16	4	4	3.5
20	3/4"	AP2 DA AP2 SR	44.5	19	205	108	120	117	155	73	90	65	11	4	105	75	14	4	105	75	14	4	98.4	70	16	4	4	5.5
25	1"	AP2 DA AP3 SR	44.5 49.5	25	210 225	108 125	125	127	155 213	73 85	100	75	11	4	115	85	14	4	115	85	14	4	108	79	16	4	4	7.5 8.5
32	1 1/4"	AP3 DA AP3 SR	49.5	32	230	125	130	140	213	85	120	90	14	4	140	100	18	4	140	100	18	4	118	89	16	4	4	10.5
40	1 1/2"	AP3 DA AP3.5 SR	49.5 53	38	235 245	125 135	140	165	213 236	85 98	130	100	14	4	150	110	18	4	150	110	18	4	127	98	16	4	4	15.5 17.0
50	2"	AP3 DA AP3.5 SR	49.5 53	48	245 255	125 135	150	178	213 236	85 98	140	110	14	4	165	125	18	4	165	125	18	4	152	121	19	4	4	19.5 21.0
65	2 1/2"	AP3.5 DA AP4 SR	53 58	65	275 290	135 150	170	190	236 276	98 110	160	130	14	4	185	145	18	4	185	145	18	8	178	140	19	4	4	26.0 27.5
80	3"	AP4 DA AP4.5 SR	58 69	76	295 320	150 177	180	203	276 310	110 128	190	150	18	4	200	160	18	8	200	160	18	8	190	152	19	4	4	35.5 38.5
100	4"	AP4.5 DA AP5 SR	69 -	95	350 365	177 190	190	229	310 366	128 140	210	170	18	4	220	180	18	8	235	190	22	8	229	191	19	8	4	48.5 50.5
125	5"	AP4.5 DA AP5.5 SR	69 -	119	370 405	177 211	325	254	310 388	128 160	240	200	18	8	250	210	18	8	270	220	26	8	254	216	22	8	4	68.5 74.0
150	6"	AP5 DA AP6 SR	- 145	- 450	405 235	190 235	350	267	366 468	140 175	265	225	18	8	285	240	22	8	300	250	26	8	279	241	22	8	4	81.5 91.0

Combinazione materiali standard - Standard materials Combination

ITEM	DENOMINAZIONE DENOMINATION	A/316 MATERIALE MATERIAL	316/316 MATERIALE MATERIAL
01	Body	Forged steel ASTM A105N	Stainless steel AISI316 UNI EN10088
02	Lateral	Forged steel ASTM A105N	Stainless steel AISI316 UNI EN10088
03	Stem	Stainless steel AISI316 UNI EN10088	Stainless steel AISI316 UNI EN10088
04	Ball	Stainless steel AISI316/304 UNI EN10088	Stainless steel AISI316 UNI EN10088

Nota: Combinazioni materiali non standard a richiesta
 Note: Non standard materials combinations on request

Combinazione materiali standard - Standard materials Combination

ITEM	DENOMINAZIONE DENOMINATION	A/316 MATERIALE MATERIAL	316/316 MATERIALE MATERIAL
05	Seat	PTFE/RPTFE	PTFE/RPTFE
06	Nuts	Galvanized Steel 8.8 EN20898-1	Galvanized Steel 8.8 EN20898-1
07	Socket springs	Galvanized Steel	Galvanized Steel
08	Stem seals	RPTFE	RPTFE

Nota: Combinazioni materiali non standard a richiesta
 Note: Non standard materials combinations on request