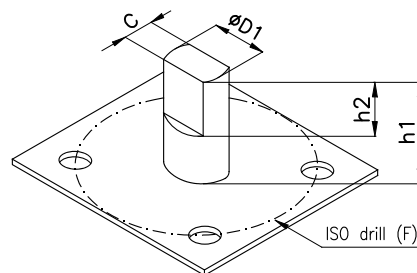
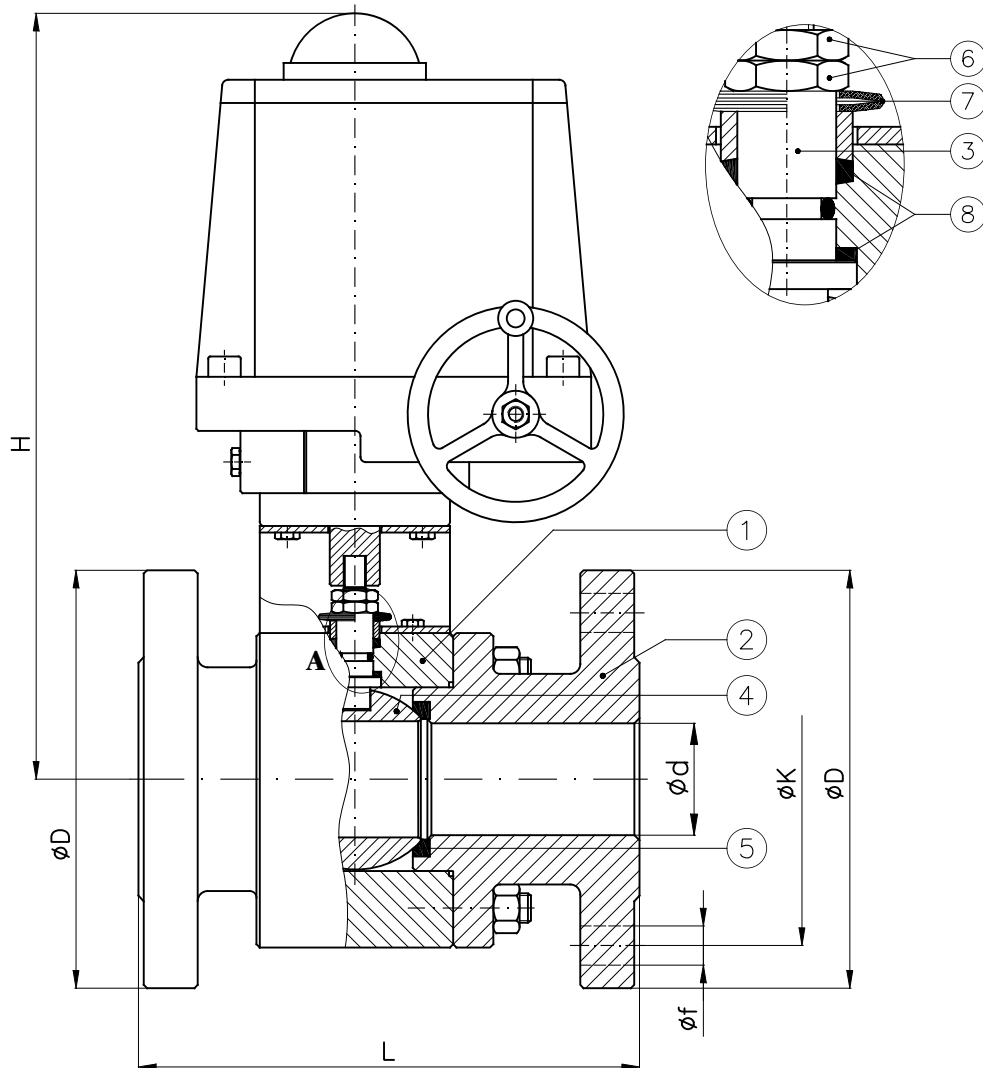




Tab 200A-ME/PS: ANSI150

Tab 200B-ME/PS: PN6-16-40

DETAIL - DETAGLIO "A"

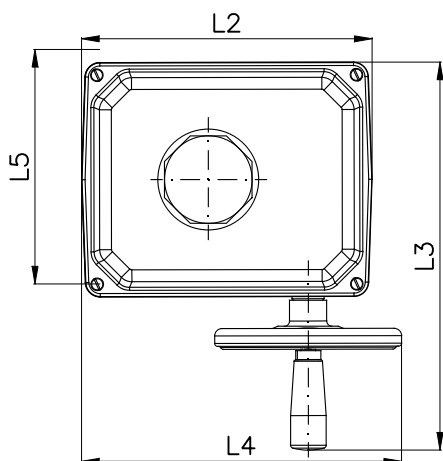


Conform to:
DIN 3202
ANSI B16.34
ANSI B16.5
UNI EN 1092

DN	D1xC	h1	h2	ISO-F	
15	1/2"	10x5.5	19	8	F03
20	3/4"	12x7.5	27	9	F04
25	1"	12x7.5	25	10	F04
32	1 1/4"	14x9	41	16	F04
40	1 1/2"	14x9	41	16	F04
50	2"	14x9	37	15	F05
65	2 1/2"	22x14	57	24	F07
80	3"	22x14	60	28	F07
100	4"	30x18	70	26	F07

DN	Electric motor	d	H (-)	Tab. 200B-ME/PS		Tab. 200A-ME/PS		PN6 - NP6				PN16 - NP16				PN40-NP40				ANSI150							
				L	Weight (Kg)	L	Weight (Kg)	D	K	f	Holes No. f	D	K	f	Holes No. f	D	K	f	Holes No. f	D	K	f	Holes No. f	L2	L3	L4	L5
15	PSQ-E100	14	360	115	9	108	9	80	55	11	4	95	65	14	4	95	65	14	4	88.9	60	16	4	174	251	206	158
20	PSQ-E100	19	365	120	10.5	117	10.5	90	65	11	4	105	75	14	4	105	75	14	4	98.4	70	16	4	174	251	206	158
25	PSQ-E100	25	370	125	12.5	127	12.5	100	75	11	4	115	85	14	4	115	85	14	4	108	79	16	4	174	251	206	158
32	PSQ-E100	32	375	130	13	140	14.5	120	90	14	4	140	100	18	4	140	100	18	4	118	89	16	4	174	251	206	158
40	PSQ-E100	38	380	140	18.5	165	19.5	130	100	14	4	150	110	18	4	150	110	18	4	127	98	16	4	174	251	206	158
50	PSQ-E100	48	390	150	21	178	24	140	110	14	4	165	125	18	4	165	125	18	4	152	121	19	4	174	251	206	158
65	PSQ103	65	405	170	29	190	31	160	130	14	4	185	145	18	4	185	145	18	8	178	140	19	4	196	263	216	158
80	PSQ203	76	500	180	35	203	42	190	150	18	4	200	160	18	8	200	160	18	8	190	152	19	4	227	305	277	186
100	PSQ503	95	595	190	64	229	68	210	170	18	4	220	180	18	8	235	190	22	8	229	191	19	8	278	416	328	235

Classe di protezione : IP67 o IP68
 Safety class : IP67 or IP68



Combinazione materiali standard - Standard materials Combination			
ITEM	DENOMINAZIONE DENOMINATION	A/316 MATERIALE MATERIAL	316/316 MATERIALE MATERIAL
01	Body	Forged steel ASTM A105N	Stainless steel AISI316 UNI EN10088
02	Lateral	Forged steel ASTM A105N	Stainless steel AISI316 UNI EN10088
03	Stem	Stainless steel AISI316 UNI EN10088	Stainless steel AISI316 UNI EN10088
04	Ball	Stainless steel AISI316/304 UNI EN10088	Stainless steel AISI316 UNI EN10088
05	Seat	PTFE/RPTFE	PTFE/RPTFE
06	Nuts	Galvanized Steel 8.8 EN20898-1	Galvanized Steel 8.8 EN20898-1
07	Socket springs	Galvanized Steel	Galvanized Steel
08	Stem seals	RPTFE	RPTFE

Nota: Combinazioni materiali non standard a richiesta
 Note: Non standard materials combinations on request