



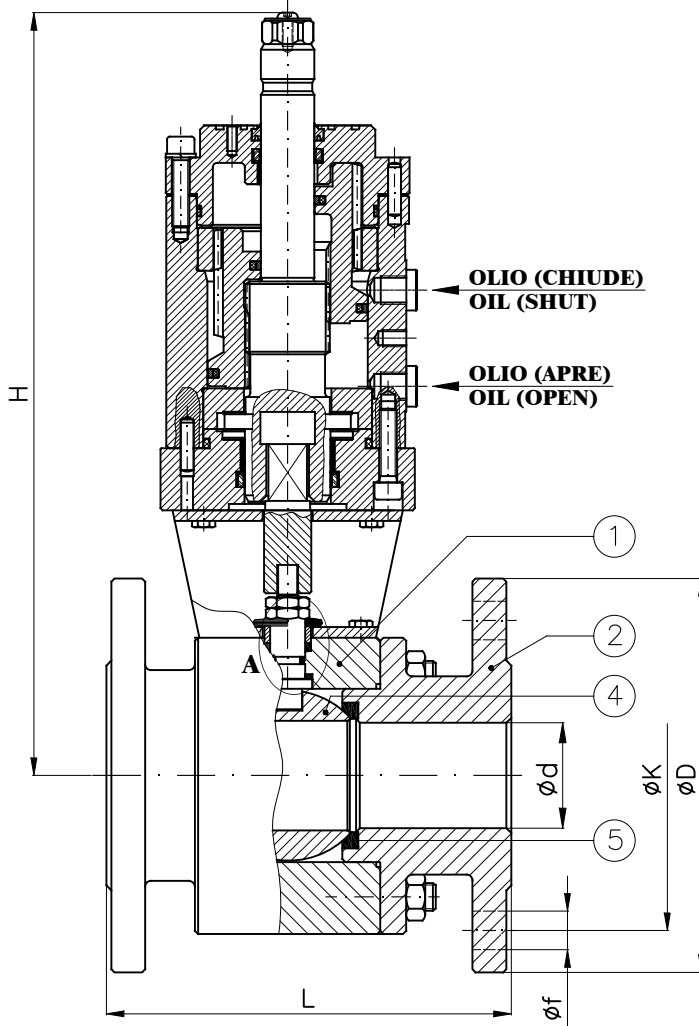
Valvole a sfera SPLIT BODY, passaggio totale flangiate PN6-16-40-ANSI150 con attuatore idraulico doppio effetto

Ball valves SPLIT BODY, full bore flanged NP6-16-40-ANSI150 with hydraulic double acting actuator

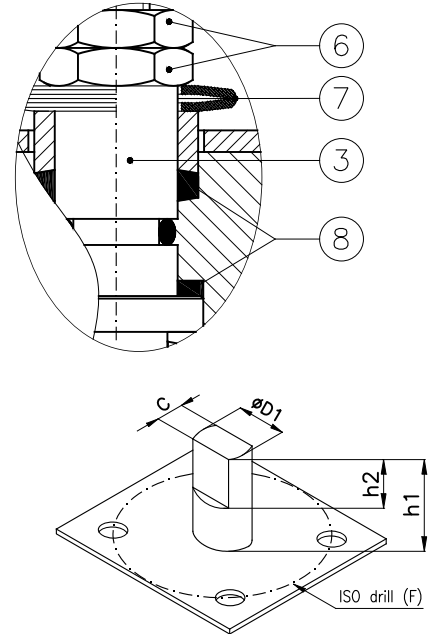
**Tab.200
Hydr/DA**

Tab 200A-Hydr/DA: ANSI150
Tab 200B-Hydr/DA: PN6-16-40

**Conform to:
DIN 3202
ANSI B16.34
ANSI B16.5
UNI EN 1092**



DETAIL - DETAGLIO "A"



Attuatore rotante a doppio effetto

Le taglie degli attuatori devono essere verificate in funzione della pressione di esercizio della valvola e della pressione dell'olio del circuito idraulico.

Double acting rotary actuator

The size of the actuator must be checked on the strength of the working pressure of the valve and on the strength of the oil pressure inside the hydraulic circuit.

DN	D1xC	h1	h2	ISO-F	
15	1/2"	10x5.5	19	8	F03
20	3/4"	12x7.5	27	9	F04
25	1"	12x7.5	25	10	F04
32	1 1/4"	14x9	41	16	F04
40	1 1/2"	14x9	41	16	F04
50	2"	14x9	37	15	F05
65	2 1/2"	22x14	57	24	F07
80	3"	22x14	60	28	F07
100	4"	30x18	70	26	F07
125	5"	30x18	64	24	F10
150	6"	30x18	64	24	F10

DN	ATTUATORE ACTUATOR	d	H (mm)	Tab. 200B-Hydr/DA		Tab. 200A-Hydr/DA		PN6 - NP6				PN16 - NP16				PN40-NP40				ANSI150			
				L	Weight (Kg)	L	Weight (Kg)	D	K	f	Holes No. f	D	K	f	Holes No. f	D	K	f	Holes No. f	D	K	f	Holes No. f
15	1/2" ARL4 (RL.05)	14	240	115	5.5	108	5.3	80	55	11	4	95	65	14	4	95	65	14	4	88.9	60	16	4
20	3/4" ARL4 (RL.05)	19	245	120	7	117	7	90	65	11	4	105	75	14	4	105	75	14	4	98.4	70	16	4
25	1" ARL4 (RL.05)	25	250	125	9	127	9	100	75	11	4	115	85	14	4	115	85	14	4	108	79	16	4
32	1 1/4" ARL10 (RL.14)	32	310	130	13	140	14	120	90	14	4	140	100	18	4	140	100	18	4	118	89	16	4
40	1 1/2" ARL10 (RL.14)	38	315	140	18	165	19	130	100	14	4	150	110	18	4	150	110	18	4	127	98	16	4
50	2" ARL10 (RL.14)	48	325	150	20	178	23	140	110	14	4	165	125	18	4	165	125	18	4	152	121	19	4
65	2 1/2" ARL20 (RL.16)	65	355	170	30	190	31	160	130	14	4	185	145	18	4	185	145	18	8	178	140	19	4
80	3" ARL20 (RL.16)	76	360	180	31	203	39	190	150	18	4	200	160	18	8	200	160	18	8	190	152	19	4
100	4" ARL45 (RL.26)	95	400	190	48	229	52	210	170	18	4	220	180	18	8	235	190	22	8	229	191	19	8
125	5" ARL75 (RL.32)	119	445	325	79	254	69	240	200	18	8	250	210	18	8	270	220	26	8	254	216	22	8
150	6" ARL75 (RL.32)	145	470	350	89	267	90	265	225	18	8	285	240	22	8	300	250	26	8	279	241	22	8

Combinazione materiali standard - Standard materials Combination			
ITEM	DENOMINAZIONE DENOMINATION	A/316 MATERIALE MATERIAL	316/316 MATERIALE MATERIAL
01	Body	Forged steel ASTM A105N	Stainless steel AISI316 UNI EN10088
02	Lateral	Forged steel ASTM A105N	Stainless steel AISI316 UNI EN10088
03	Stem	Stainless steel AISI316 UNI EN10088	Stainless steel AISI316 UNI EN10088
04	Ball	Stainless steel AISI316/304 UNI EN10088	Stainless steel AISI316 UNI EN10088

Nota: Combinazioni materiali non standard a richiesta
Note: Non standard materials combinations on request

Combinazione materiali standard - Standard materials Combination			
ITEM	DENOMINAZIONE DENOMINATION	A/316 MATERIALE MATERIAL	316/316 MATERIALE MATERIAL
05	Seat	PTFE/RPTFE	PTFE/RPTFE
06	Nuts	Galvanized Steel 8.8 EN20898-1	Galvanized Steel 8.8 EN20898-1
07	Socket springs	Galvanized Steel	Galvanized Steel
08	Stem seals	RPTFE	RPTFE

Nota: Combinazioni materiali non standard a richiesta
Note: Non standard materials combinations on request