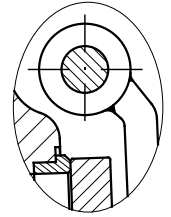
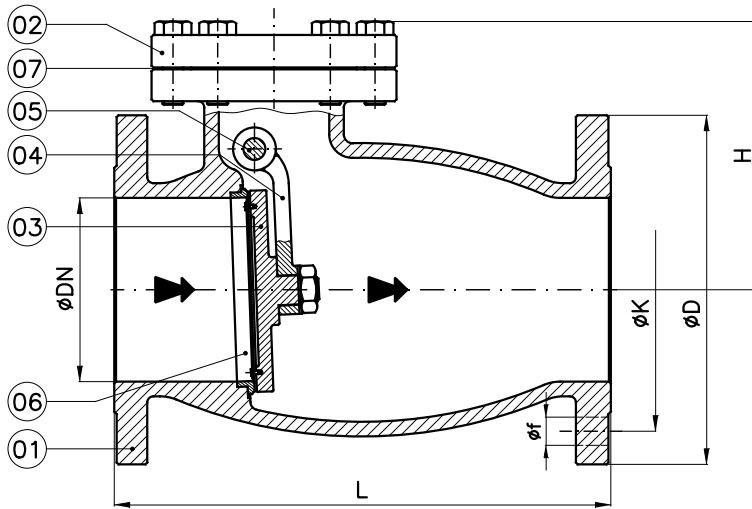




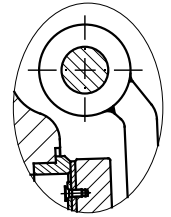
RF FLANGES: A/GS

FF FLANGES: B/G

Conform to:
UNI EN1092
NE407210
NE407230

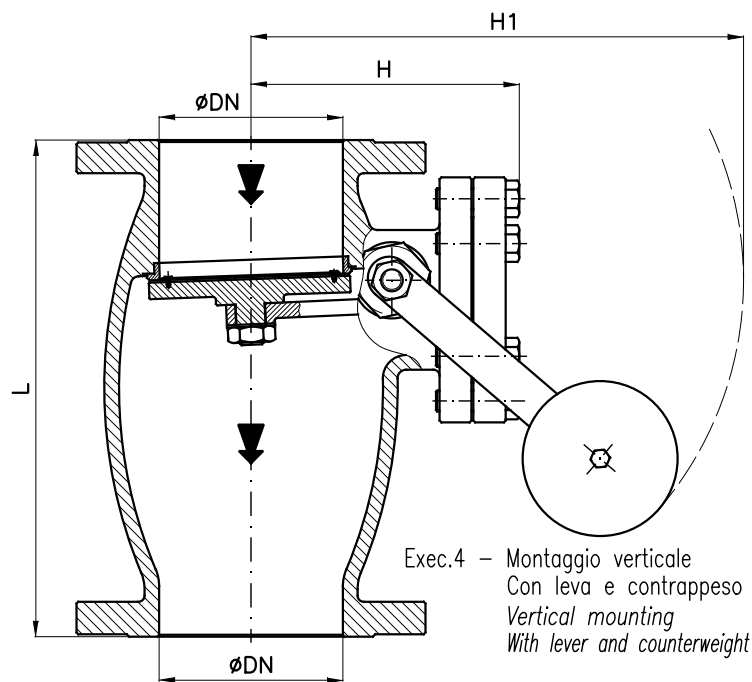
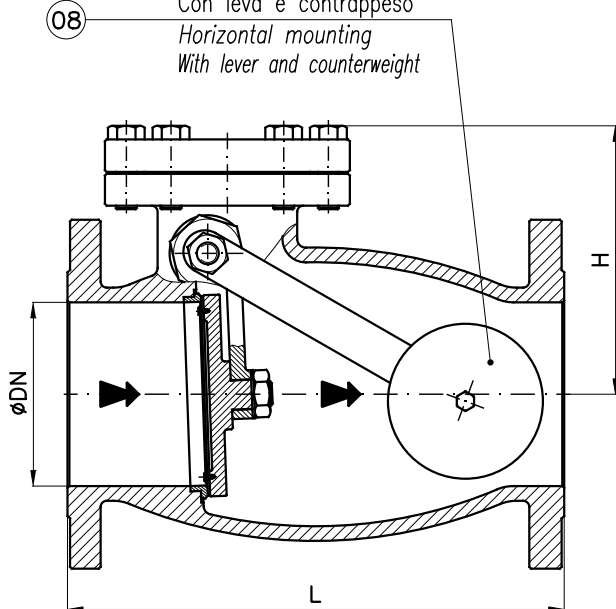


Exec.1 - Sede metallica
Metal seat



Exec.2 - Sede di tenuta in gomma
Disc seat ring in rubber

Exec.3 - Montaggio orizzontale
Con leva e contrappeso
Horizontal mounting
With lever and counterweight



Exec.4 - Montaggio verticale
Con leva e contrappeso
Vertical mounting
With lever and counterweight

*: Per fusioni in ghisa (G), L=180

*: For cast iron material (G), L=180

DN	H (~)	H1 (~)	L	PN6					PN16				
				D	K	f	Holes NO. f	Exec.1 Weight (Kg)	D	K	f	Holes NO. f	Exec.1 Weight (Kg)
40*	135	260	200	130	100	14	4	8	150	110	18	4	9
50	135	270	200	140	110	14	4	10	165	125	18	4	11
65	155	420	240	160	130	14	4	16	185	145	18	4	19
80	165	430	260	190	150	18	4	17	200	160	18	8	21
100	180	450	300	210	170	18	4	30	220	180	18	8	32
125	220	470	350	240	200	18	8	40	250	210	18	8	42
150	245	550	400	265	225	18	8	65	285	240	22	8	69
200	275	640	500	320	280	18	8	90	340	295	22	12	93
250	320	745	600	375	335	18	12	152	405	355	26	12	
300	410	950	700	440	395	22	12	221	460	410	26	12	
350				490	445	22	12		520	470	26	16	
400				540	495	22	16		580	525	30	16	
450				595	550	22	16		640	585	30	20	