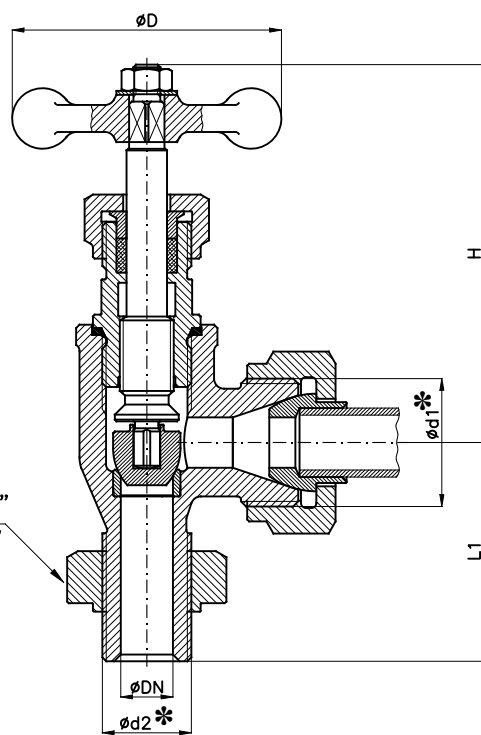
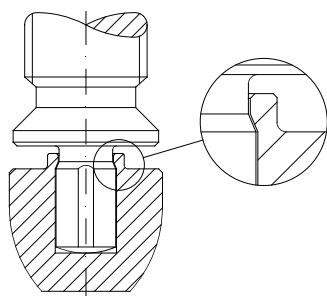


Exec.01

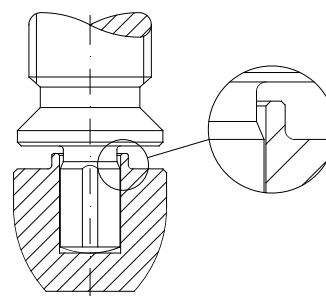


Exec.02

OTTURATORI – DISCS



COMANDATO
SDSL type



SEMI AUTOMATICO
SDNR type

*: Filettatura GAS

*: BSPB threaded

▲: a richiesta $\varnothing d2=5/8''$ Gas

▲: on request $\varnothing d2=5/8''$ Gas

DN	a	D	d1	d2	H (~)	h	L	L1	S	Weight (Kg)
6	14	64	1/2"	3/8"	105	33	40	52	27	1.55
8	14	64	5/8"	1/2"	105	33	40	52	27	1.65
10	15	64	3/4"	1/2"▲	105	35	43	55	30	1.65
15	16	80	1"	3/4"	115	42	52	65	36	1.75
20	16	80	1"1/8"	1"	115	42	52	65	36	2

Exec.	Acciaio – Cast steel	Ottone – brass
01	UNAV 8354.1	UNAV 8355.1
02	UNAV 8691.1	UNAV 8691.1

Combinazione materiali standard – Standard materials Combination			
ITEM	DENOMINAZIONE DENOMINATION	A/316 MATERIALE MATERIAL	O/O MATERIALE MATERIAL
01	Body	Forged steel ASTM A105	Brass CW617N (OT58)
02	Bonnet	Forged steel ASTM A105	Brass CW617N (OT58)
03	Disc	Stainless steel AISI316 UNI EN10088	Brass CW617N (OT58)
04	Stem	Stainless steel AISI316 UNI EN10088	Brass CW617N (OT58)
05	Cap	Steel A37 UNI EN10217-1	Brass CW617N (OT58)
06	Ogive	Steel A37 UNI EN10217-1	Copper
07	Gasket	Copper	Copper
08	Packing	KTL	KTL
09	Handwheel	Steel A37 UNI EN10217-1	Brass CW617N (OT58)
Nota:		Combinazioni materiali non standard a richiesta	
Note:		Non standard materials combinations on request	