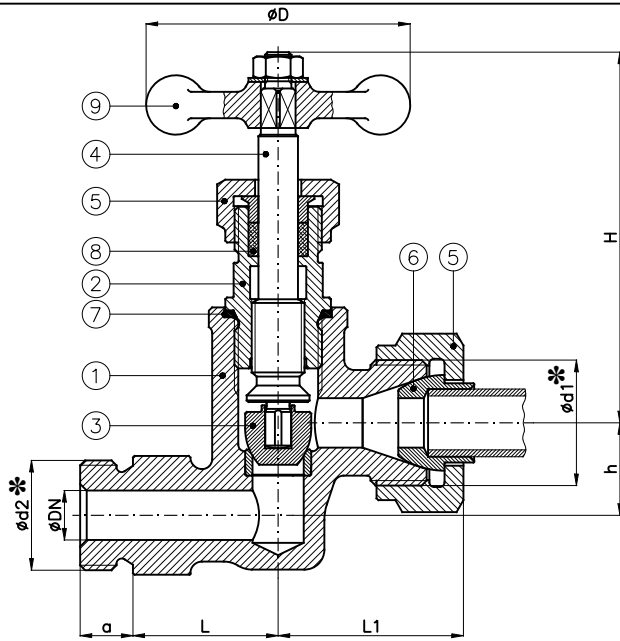


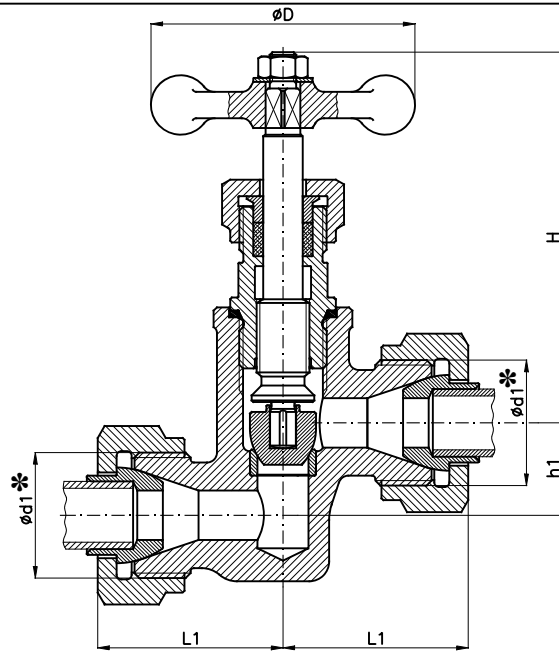


Valvole a raccordo ogiva PN40 via diritta
Stop valves NP40 straight type nipple union

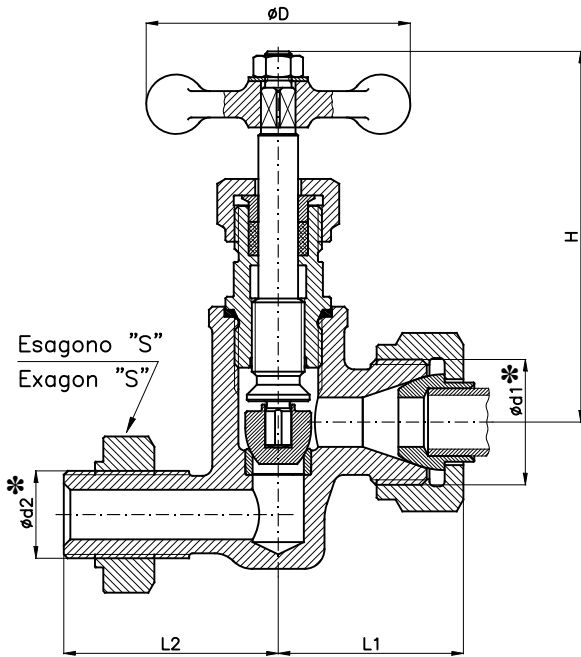
Conform to:
NE421344
NE421444
NE423344



Exec.01

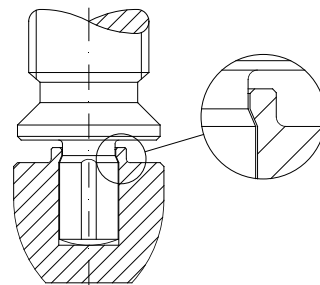


Exec.02

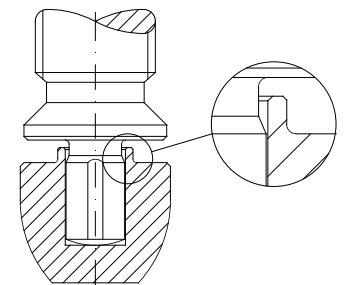


Exec.03

OTTURATORI – DISCS



COMANDATO
SDSL type



SEMI AUTOMATICO
SDNR type

* : Filettatura GAS
 * : BSPP threaded

▲ : a richiesta $\phi d2=5/8''$
 ▲ : on request $\phi d2=5/8''$

DN	a	D	d1	d2	H (\sim)	h	h1	L	L1	L2	S	Weight (Kg)
6	14	64	1/2"	3/8"	105	16	20	34	40	53	27	1.65
8	14	64	5/8"	1/2"	105	22	20	34	40	53	27	1.8
10	15	64	3/4"	1/2"▲	105	22	20	36	43	56	30	1.8
15	16	80	1"	3/4"	115	28	28	44	52	65	36	1.9
20	16	80	1 1/8"	1"	115	28	28	44	52	65	36	2.2

Exec.	Acciaio – Cast steel	Ottone – brass
01	UNAV 8350.1	UNAV 8351.1
02	UNAV 8352.1	UNAV 8353.1
03	UNAV 8690.1	UNAV 8690.1

Combinazione materiali standard – Standard materials Combination			
ITEM	DENOMINAZIONE DENOMINATION	A/316 MATERIALE MATERIAL	O/O MATERIALE MATERIAL
01	Body	Forged steel ASTM A105	Brass CW617N (OT58)
02	Bonnet	Forged steel ASTM A105	Brass CW617N (OT58)
03	Disc	Stainless steel AISI316 UNI EN10088	Brass CW617N (OT58)
04	Stem	Stainless steel AISI316 UNI EN10088	Brass CW617N (OT58)
05	Cap	Steel A37 UNI EN10217-1	Brass CW617N (OT58)
06	Ogive	Steel A37 UNI EN10217-1	Copper
07	Gasket	Copper	Copper
08	Packing	KTL	KTL
09	Handwheel	Steel A37 UNI EN10217-1	Brass CW617N (OT58)

Nota: Combinazioni materiali non standard a richiesta
Note: Non standard materials combinations on request