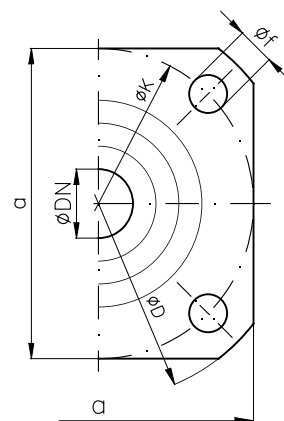


**Tab.111.1B PN10M.M.I.**  
comandata (SDSL) with fixed disc (SDSL) UNI 2450 UNAV 9340-9348

**Tab.111.2B PN10M.M.I.**  
semiautomatica (SDNR) with loose disc (SDNR) UNI 2452 UNAV 9344-9360

DN	a	C1	D1	H SDSL (~)	h SDSL	H1 SDNR (~)	h1 SDNR	L	D	K	f	Holes NO. f	Weight (Kg)
15	72	100	100	150	10	175	10	55	90	65	14	4	2.1
20	72	100	100	150	10	175	10	55	90	65	14	4	2.1
25	78	100	100	150	10	175	10	60	95	70	14	4	2.3
32	82	125	125	175	13	205	12	65	100	75	14	4	3.3



Combinazione materiali standard – Standard materials Combination					
ITEM	DENOMINAZIONE DENOMINATION	B/316 MATERIALE MATERIAL	B/B MATERIALE MATERIAL	N/316 MATERIALE MATERIAL	N/M MATERIALE MATERIAL
01	Body	Bronze UNI EN1982 G-CuSn5Zn5Pb5	Bronze UNI EN1982 G-CuSn5Zn5Pb5	Bronze UNI EN1982 G-CuSn10Zn2Ni2	Bronze UNI EN1982 G-CuSn10Zn2Ni2
02	Bonnet	Bronze UNI EN1982 G-CuSn5Zn5Pb5	Bronze UNI EN1982 G-CuSn5Zn5Pb5	Bronze UNI EN1982 G-CuSn10Zn2Ni2	Bronze UNI EN1982 G-CuSn10Zn2Ni2
03	Integral body seat	Bronze UNI EN1982 G-CuSn5Zn5Pb5	Bronze UNI EN1982 G-CuSn5Zn5Pb5	Bronze UNI EN1982 G-CuSn10Zn2Ni2	Bronze UNI EN1982 G-CuSn10Zn2Ni2
04	Disc	Stainless steel AISI316 UNI EN10088	Bronze UNI EN1982 G-CuSn5Zn5Pb5	Stainless steel AISI316 UNI EN10088	Monel K500 BS 3076 NA18 (2.4375)
05	Stem	Stainless steel AISI316 UNI EN10088	Brass CW617N (OT58)	Stainless steel AISI316 UNI EN10088	Monel K500 BS 3076 NA18 (2.4375)
06	Handwheel	Sheet of carbon steel	Sheet of carbon steel	Sheet of carbon steel	Sheet of carbon steel
07	Handle	Steel A37 UNI EN10217-1	Steel A37 UNI EN10217-1	Steel A37 UNI EN10217-1	Steel A37 UNI EN10217-1
08	Gasket	Planiflex KG carbo/C PF81	Planiflex KG carbo/C PF81	Planiflex KG carbo/C PF81	Planiflex KG carbo/C PF81
09	Packing	Carbograph GR8800	Carbograph GR8800	Carbograph GR8800	Carbograph GR8800

Nota: Combinazioni materiali non standard a richiesta  
Note: Non standard materials combinations on request