



Valvole a globo PN10DIN-PN16 con attuatore idraulico semplice effetto normalmente aperto (FO)

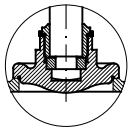
Globe valves NP10DIN-NP16 with hydraulic single acting actuator fail open (FO)

Tab.126GS-SR-FO

(Ex Tab. 129/1-SR-FO)

**Conform to:
UNI EN1092
DIN 3202**

Esecuzione 01
con otturatore Com.



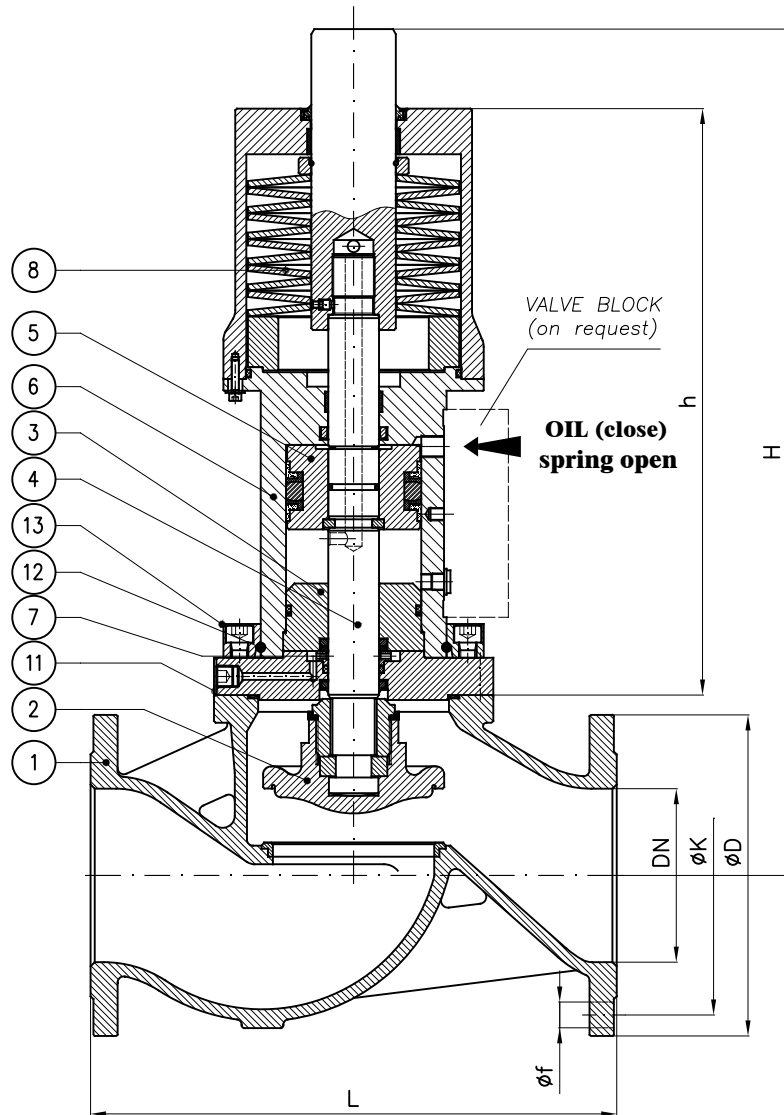
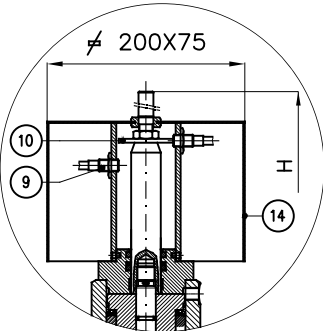
Execution 01
with SDSL disc

Esecuzione 02
con otturatore Aut.



Execution 02
with SDNR disc

con Proximity limit switch (a richiesta)
with Proximity limit switch (on request)



N.B.: Il dimensionamento e quindi anche l'ingombro dell'attuatore è funzione dei seguenti dati che devono sempre essere forniti:

- Pressione esercizio della valvola
- pressione olio all'attuatore
- Servizio

Note.: The size and so the overall dimension of the actuator depends by the following informations that should always be provided:

- Valve's working pressure
- Oil pressure to actuator
- Service

| DN | h (~) | H (~) | L | Weight (Kg) | PN10DIN | | | | PN16 | | | |
|-----|-------|-------|-----|-------------|---------|-----|----|-------------|------|-----|----|-------------|
| | | | | | øD | K | f | Holes NO. f | øD | K | f | Holes NO. f |
| 32 | 305 | 410 | 180 | | 140 | 100 | 18 | 4 | 140 | 100 | 18 | 4 |
| 40 | 305 | 410 | 200 | | 150 | 110 | 18 | 4 | 150 | 110 | 18 | 4 |
| 50 | 295 | 410 | 230 | | 165 | 125 | 18 | 4 | 165 | 125 | 18 | 4 |
| 65 | 285 | 430 | 290 | | 185 | 145 | 18 | 4 | 185 | 145 | 18 | 4 |
| 80 | 335 | 485 | 310 | | 200 | 160 | 18 | 8 | 200 | 160 | 18 | 8 |
| 100 | 320 | 495 | 350 | | 220 | 180 | 18 | 8 | 220 | 180 | 18 | 8 |
| 125 | 420 | 620 | 400 | | 250 | 210 | 18 | 8 | 250 | 210 | 18 | 8 |
| 150 | 485 | 710 | 480 | | 285 | 240 | 22 | 8 | 285 | 240 | 22 | 8 |
| 200 | 485 | 780 | 600 | | 340 | 295 | 22 | 8 | 340 | 295 | 22 | 12 |
| 250 | 565 | 830 | 730 | | 395 | 350 | 22 | 12 | 405 | 355 | 26 | 12 |

| Combinazione materiali standard – Standard materials Combination | | | |
|--|----------------------------|---|---|
| ITEM | DENOMINAZIONE DENOMINATION | GS/316 MATERIALE MATERIAL | GS/B MATERIALE MATERIAL |
| 01 | Body | Nodular cast iron EN-GJS-400-15U UNI EN1563 | Nodular cast iron EN-GJS-400-15U UNI EN1563 |
| 02 | Disc (≤ DN80) | Stainless steel AISI316 UNI EN10088 | Bronze UNI EN1982 G-CuSn5Zn5Pb5 |
| 02 | Disc (≥ DN100) | Cast steel GP240-GH UNI EN10213 plus AISI316 facing welding | Bronze UNI EN1982 G-CuSn5Zn5Pb5 |
| 03 | Inner head flange | Cast iron UNI EN1561 EN-GJL-250 | Cast iron UNI EN1561 EN-GJL-250 |
| 04 | Stem | Stainless steel AISI316 UNI EN10088 | Stainless steel AISI316 UNI EN10088 |
| 05 | Piston | Steel 9SMnPb28 UNI EN10087 | Steel 9SMnPb28 UNI EN10087 |
| 06 | Housing assembly | Fe52.2 GALVANIZED | Fe52.2 GALVANIZED |
| 07 | Back rod | Steel 9SMnPb28 UNI EN10087 | Steel 9SMnPb28 UNI EN10087 |
| 08 | Disk spring | Steel UNI EN10270 | Steel UNI EN10270 |
| 09 | Proximity switch | CEED BG12/2PF2 PNP CEOM E2FX2E2G NPN | CEED BG12/2PF2 PNP CEOM E2FX2E2G NPN |
| 10 | Indicator washer | Steel 9SMnPb28 UNI EN10087 | Steel 9SMnPb28 UNI EN10087 |
| 11 | Flange | Steel UNI C40 | Steel UNI C40 |
| 12 | Snap ring ø5 | Stainless steel AISI316 UNI EN10088 | Stainless steel AISI316 UNI EN10088 |
| 13 | Collar | Fe52.2 GALVANIZED | Fe52.2 GALVANIZED |
| 14 | Shield | Stainless steel AISI316 UNI EN10088 | Stainless steel AISI316 UNI EN10088 |

Nota: Combinazioni materiali non standard a richiesta
Note: Non standard materials combinations on request